

GENERAL NOTES

- CONTACT EACH MUNICIPAL, GOVERNMENTAL, OR PRIVATE UTILITY COMPANIES TO DETERMINE THE LOCATION OF ALL UNDERGROUND UTILITIES PRIOR TO ANY EXCAVATION.
- SCHEDULE AND COORDINATE ALL SHUT DOWNS OF EXISTING UTILITIES WITH THE OWNER IN ADVANCE A MINIMUM OF SEVEN (7) DAYS PRIOR TO SHUT DOWN.
- PROVIDE ALL REQUIRED EROSION CONTROL MEASURES PRIOR TO ANY EXCAVATION.
- A CHEMICAL TOILET IS REQUIRED ON-SITE DURING CONSTRUCTION.
- OTHER WORK MAY BE PERFORMED UNDER A SEPARATE CONTRACT AT THE CLIENT'S PROPERTY. COORDINATE WITH ALL OTHER CONTRACTED TRADES SO AS TO NOT INTERFERE WITH THEIR WORK.
- ALL FASTENERS IN CONTACT WITH PRESERVATIVE TREATED WOOD SHALL BE HOT DIPPED GALVANIZED.
- REFER TO STRUCTURAL DRAWINGS FOR STRUCTURAL REQUIREMENTS; SIZE, SPACING AND LOCATION OF ALL STRUCTURAL MEMBERS.
- STRICTLY FOLLOW ALL MANUFACTURER'S INSTALLATION INSTRUCTIONS WHEN USING OR INSTALLING PRODUCTS.
- ALL DOOR AND WINDOW DIMENSIONS ARE APPROXIMATE, VERIFY MANUFACTURER SPECIFICATIONS FOR EXACT SIZE.
- USE 5/8" TYPE X GYPSUM WALL BOARD THROUGHOUT. PROVIDE WATER RESISTANT GYPSUM WALL BOARD IN RESTROOMS WITH SHOWERS. PROVIDE FRAMING AT 16" O.C. MAX AT CEILINGS WHERE WATER RESISTANT GYPSUM WALL BOARD IS INSTALLED.
- FIRE BLOCKING SHALL BE PROVIDED IN STUD CAVITIES OVER 10' IN HEIGHT.
- CONTACT DESIGNER OR ENGINEER OF RECORD TO CONFIRM DIMENSIONS IF NOT LISTED.
- ITEMS LISTED ARE TO BE PROVIDED BY OTHERS, CONTACT OWNER FOR SPECIFICATIONS, DOES NOT BE RESPONSIBLE UNO.
 - A. FOUNDATION: CONCRETE, ANCHOR BOLTS, FIBER MESH, WATER PROOF MEMBRANE, REBAR, INSULATION
 - B. ROOFING: ROOFING MATERIAL MOISTURE BARRIER, VENTING, GUTTERS, FLASHING, NAILS, WATER PROOFING.
 - C. GENERAL: INSULATION, STONE MASONRY, NAILS & SCREWS, PLUMBING & FIXTURES, ELECTRICAL & FIXTURES, MECHANICAL & FIXTURES, CASEWORK, FLOOR FINISH, WALL FINISH, & CEILING FINISH.

SHEET INDEX

- A-001 TITLE SHEET & GENERAL NOTES
- A-002 3D VIEWS - EXTERIOR
- A-003 3D VIEWS - INTERIOR
- A-101 MAIN LEVEL
- A-102 ROOF PLAN
- A-103 SCHEDULES
- A-201 ELEVATIONS
- A-202 ELEVATIONS
- A-301 SECTIONS
- A-401 ACCESSIBILITY DETAILS
- A-501 WALL DETAILS

AREA - CONDITIONED SPACE	
NOTE: CONDITIONED SPACE MEASURED FROM EXTERIOR SURFACES OF EXTERIOR FRAMING & HEAD CLEARANCE ABOVE 48"	
CONDITIONED	5040 SF
MAIN HALL	5040 SF
OUTDOOR	
COVERED PATIO	488 SF
COVERED SHED	2480 SF
GRAND TOTAL	2968 SF
	8009 SF

REVIVE AK LIFE CENTER

5021 O'MALLEY ROAD
ANCHORAGE, AK 99507

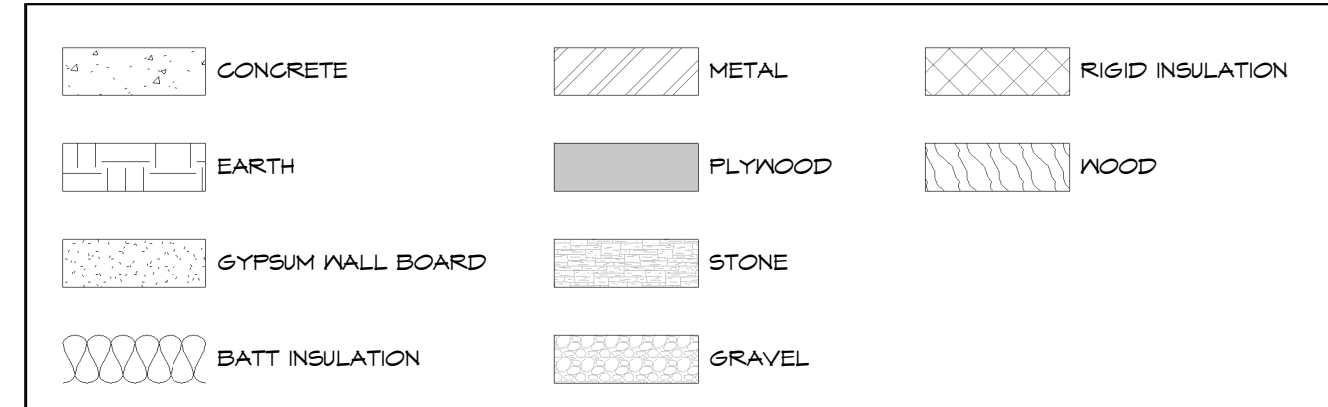
11251 SE 232nd AVE



DAMASCUS, OR 97089

REVIVE AK LIFE CENTER
 5021 O'MALLEY ROAD
 ANCHORAGE, AK 99507

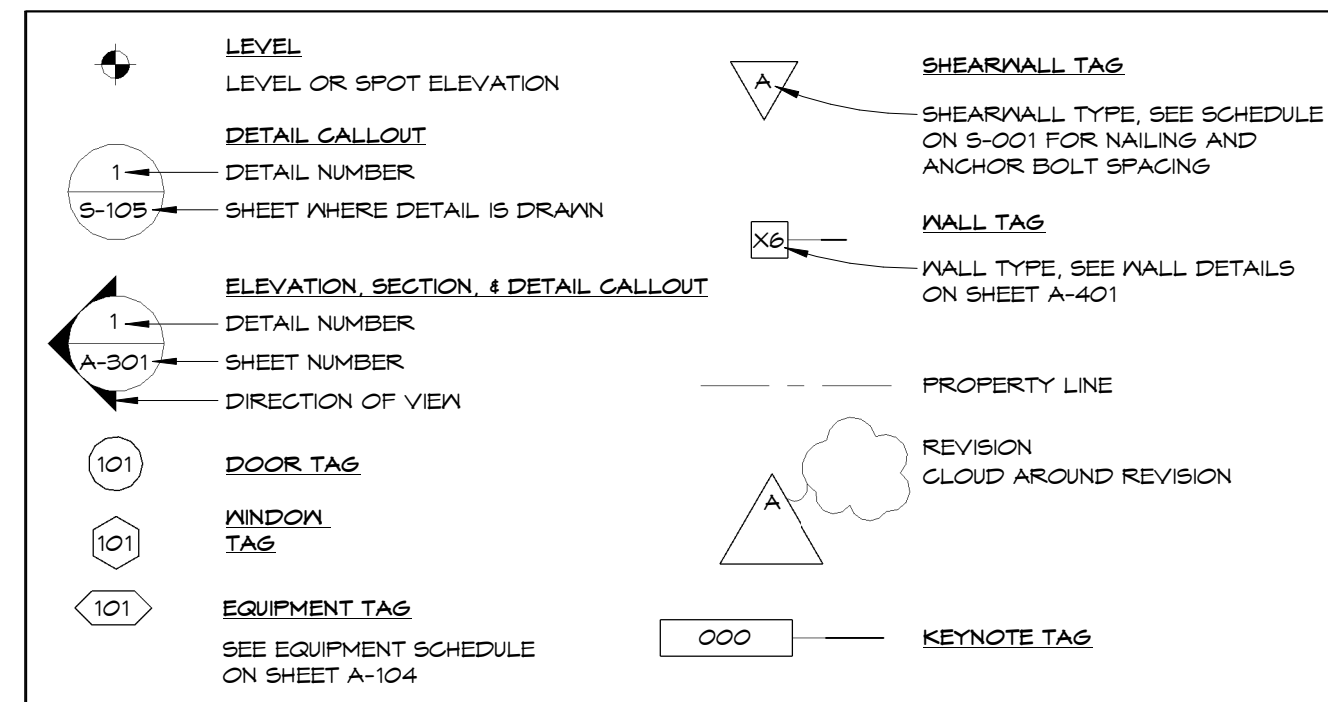
MATERIALS



PROJECT DESCRIPTION

SINGLE STORY PANTRY w/ GATHERING SPACE

REFERENCE SYMBOLS

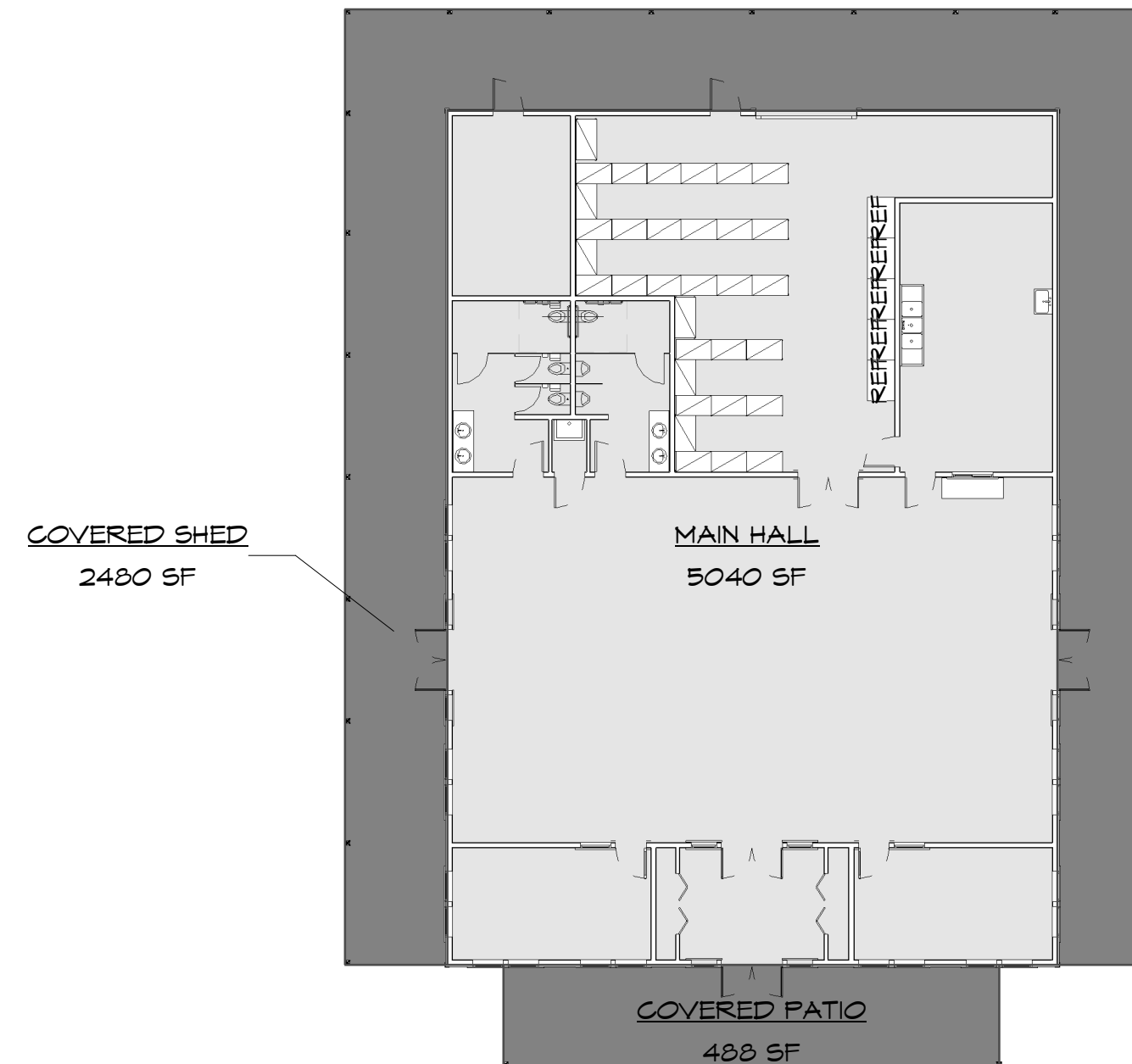


PROJECT DIRECTORY

OWNER
FRANCE NYANKUDU
5021 O'MALLEY ROAD
ANCHORAGE, AK 99507

CONTRACTOR

REGISTERED DESIGN PROFESSIONAL
ECLIPSE ENGINEERING, P.C.
2140 SW JEFFERSON ST., SUITE 200
PORTLAND, OR 97201
CONTACT: SCOTT RATTERMAN, P.E.
503.398.1229
SRATTERMAN@ECLIPSE-ENGINEERING.COM



1 MAIN LEVEL AREA PLAN
1/16" = 1'-0"

ABBREVIATIONS

AFF	ABOVE FINISHED FLOOR	FC	FRAMING CLIP	NIC	NOT IN CONTRACT	TEL	TELEPHONE
ADJ	ADJACENT	FRP	FIBER REINFORCED PLASTIC	NTS	NOT TO SCALE	TV	TELEVISION
AGG	AGGREGATE	FFL	FINISHED FLOOR LINE	OC	ON CENTER (S)	TEMP	TEMPERED GLAZING
A/C	AIR CONDITIONING	FE	FIRE EXTINGUISHER	OD	OUTSIDE DIAMETER	THK	THICK (NESS)
ALT	ALTERNATE	FD	FLOOR DRAIN	OVD	OVEN	TFD	TOILET PAPER DISPENSER
ALUM	ALUMINUM	FTG	FOOTING	OY		T&G	TONGUE AND GROOVE
AB	ANCHOR BOLT	FND	FOUNDATION	FB	PROVIDED BY	T.O.	TOP OF
ABV	ABOVE			FBO	PROVIDED BY OTHERS	TB	TOBEL BAR
ARCH	ARCHITECT (A/RAL)	SA	GAUGE	FEN	PENETRATION	TYP	TYPICAL
ASPH	ASPHALT	GALV	GALVANIZED	FTD	PRESSURE TREATED	UNO	UNLESS NOTED OTHERWISE
BLK	BLOCK	GB	GRAB BAR	FLM	PAPER TOWEL DISPENSER	VPB	VAPOR BARRIER
BLKG	BLOCKING	GLB	GULLWAY BEAM	PL	PLATE, PROPERTY LINE	VP	VERIFY IN FIELD
BD	BOARD	GSN	GENERAL STRUCTURAL NOTES	PLM	PLASTIC LAMINATE	VERT	VERTICAL
BLDG	BUILDING	GWB	GYPSUM WALL BOARD	PL	PLATE, PROPERTY LINE	VB	VINYL BASE
		HND	HARDWOOD	PLYWD	PLYWOOD	VCT	VINYL COMPOSITION TILE
CAB	CABINET	HVAC	HEATING/VENTILATING/A/C	PSF	POLYVINYL CHLORIDE	VF	VINYL FABRIC
CPT	CARPET (ED)	HSS	HOLLOW STRUCTURAL STEEL	PSI	POUNDS PER SQUARE INCH	VT	VINYL TILE
CLG	CEILING	HB	HOSE BIBB	QT	QUARRY TILE	VNC	VINYL WALL COVERING
CL	CENTERLINE	ID	INSIDE DIAMETER	RCA	RAISED CENTER AISLE	WC	WATER CLOSET
CT	CERAMIC TILE	INSUL	INSULATE (D), (IG)	REF	REFRIGERATOR	WRB	WATER RESISTANT BARRIER
CO	CLEANOUT	INT	INTERIOR INV INVERT	REIN	REINFORCE (D), (NG)	WH	WATER HEATER
COL	COLUMN	KIT	KITCHEN	REQD	REQUIRED	WP	WATERPROOFING
CONC	CONCRETE	LAB	LABORATORY	RYM	RIGHT OF WAY	WAF	WELDED WIRE FABRIC
CMU	CONCRETE MASONRY UNIT	LAM	LAMINATE (D)	RM	ROOM	W	WEST, NORTH, WEST
CJ	CONTINUOUS OR CONTINUE	LAV	LAVATORY	RB	RUBBER BASE	WDW	WINDOW
CONT	CONTINUOUS OR CONTINUE	LH	LEFT HAND	RBT	RUBBER TILE	W/O	WITHOUT
CF	CUBIC FOOT	LF	LINEAR FEET	SC	SCHEDULE	WB	WOOD BASE
CY	CUBIC YARD	LVL	LAMINATED VENEER LUMBER	SCH	SCHEDULE	WD	WOOD
		LSL	LAMINATED STRAND LUMBER	SLR	SEALER (CONCRETE SEALER)	WPT	WORKING POINT
DEMO	DEMOLISH	MH	MANHOLE	SECT	SECTION		
DET	DETAIL	MFR	MANUFACTURE (ER)	SHT	SHEET VINYL		
DIA	DIAMETER	MAT	MATERIAL (S)	SIM	SIMILAR		
DN	DOWN	MAX	MAXIMUM	SG	SOLID CORE		
DS	DOWNSPOUT	MECH	MECHANICAL (-LY)	SPEC	SPECIFICATION (S)		
DW	DISHWASHER	MTL	METAL	SF	SQUARE FEET		
ELEC	ELECTRIC (AL)	MTL	MILLIMETER (S)	SG	SQUARE		
EQ	EQUAL	MM	MILLIMETER (S)	SS	STAINLESS STEEL		
EQUIP	EQUIPMENT	MIN	MINIMUM	STD	STANDARD		
EN	EDGE NAIL	MISC	MISCELLANEOUS	STL	STEEL		
EX	EXISTING			SD	STORM DRAIN		
				SUSP	SUSPENDED		
				SW	SHEAR WALL		
				SW	STEP IN WALL		



DISCLAIMER:
ALL 3D IMAGES ARE AN APPROXIMATE ONLY. ALL 3D IMAGES ARE SHOWN FOR ILLUSTRATION PURPOSES ONLY. 2D DRAWINGS SHALL SUPERSEDE ALL ITEMS SHOWN ON 3D IMAGES. THIS SHEET IS PROVIDED AS A REPRESENTATION AND IS 'NOT FOR CONSTRUCTION'

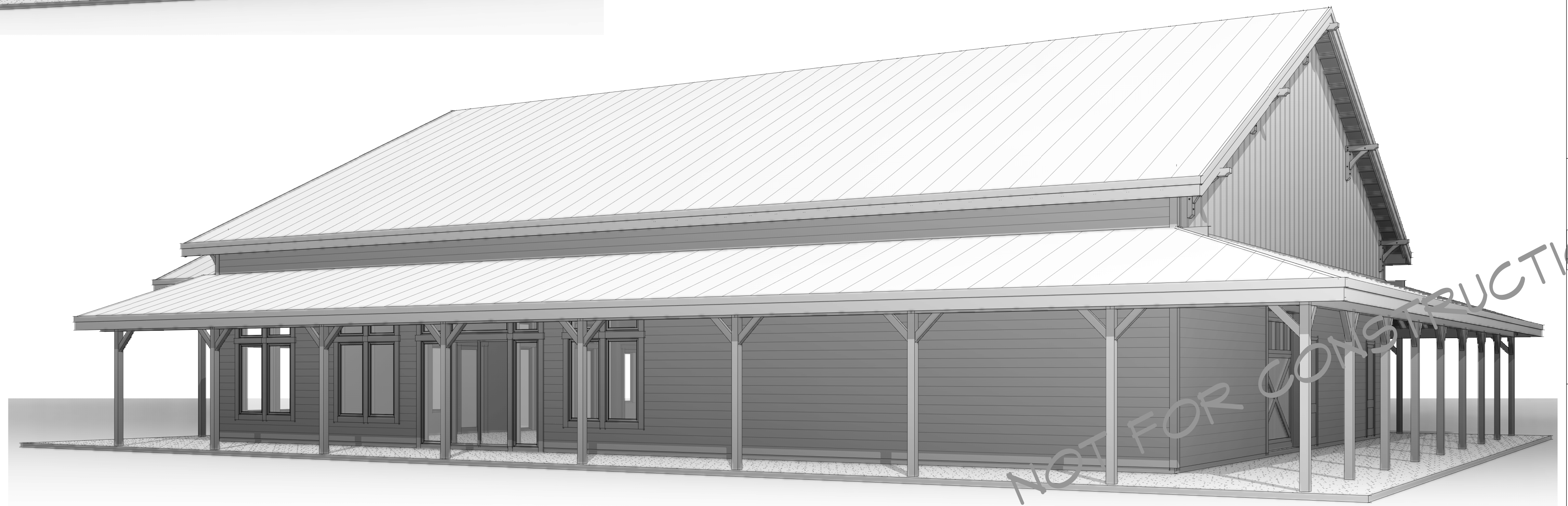
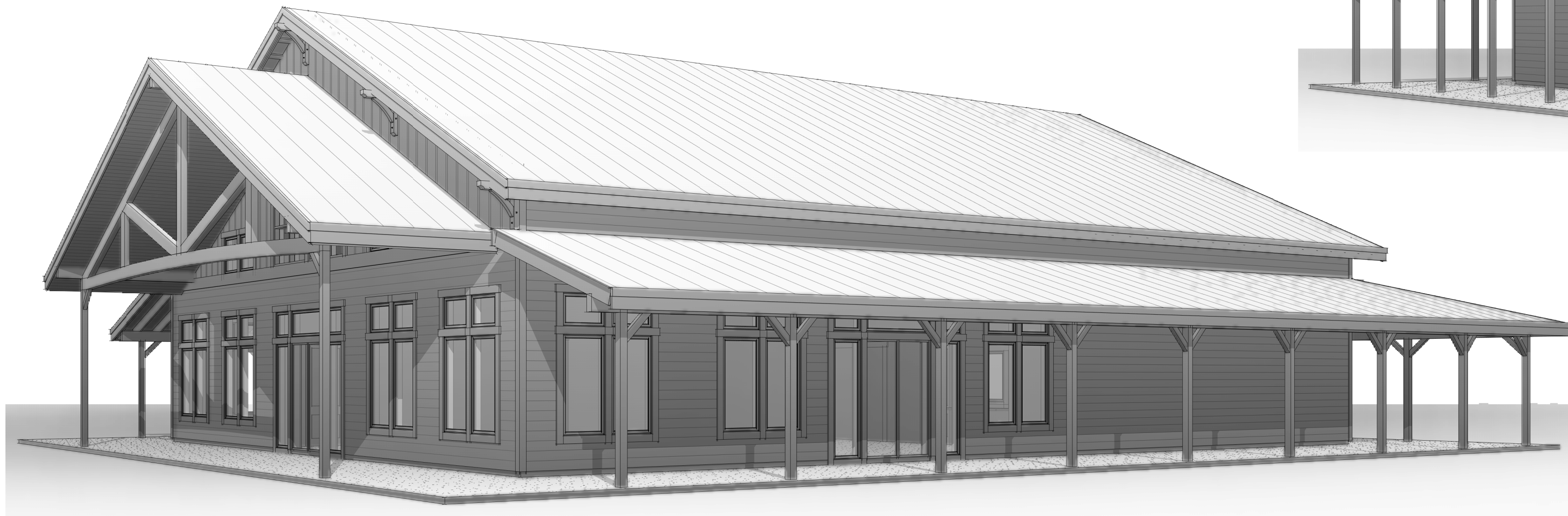
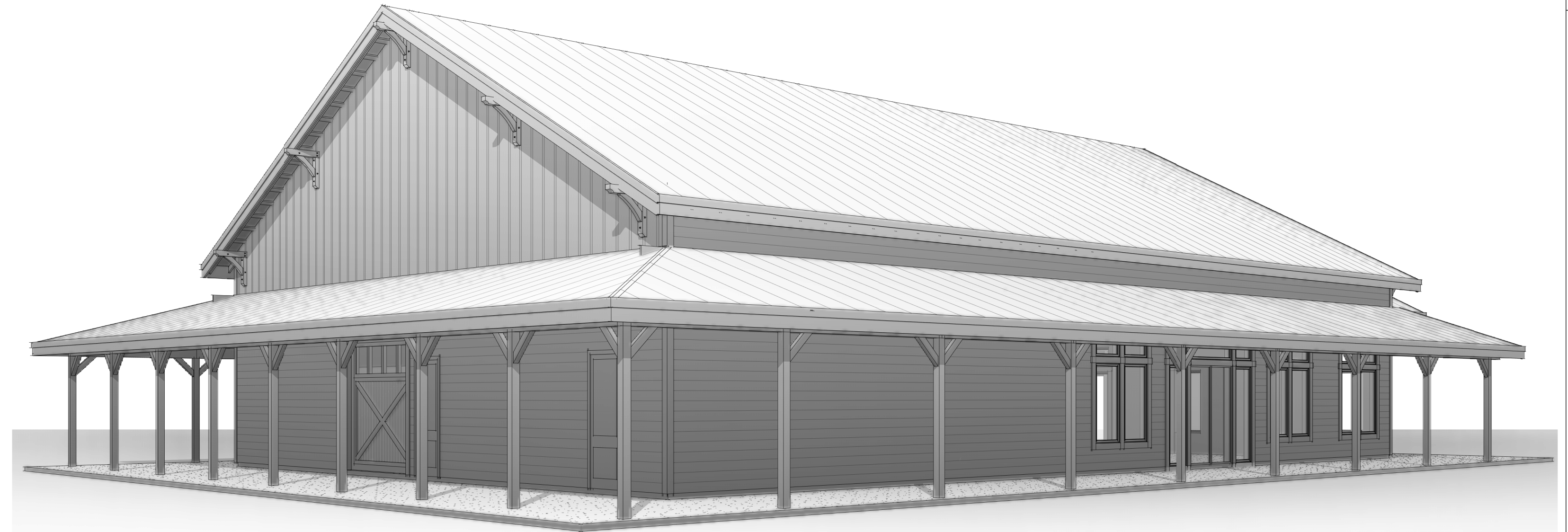
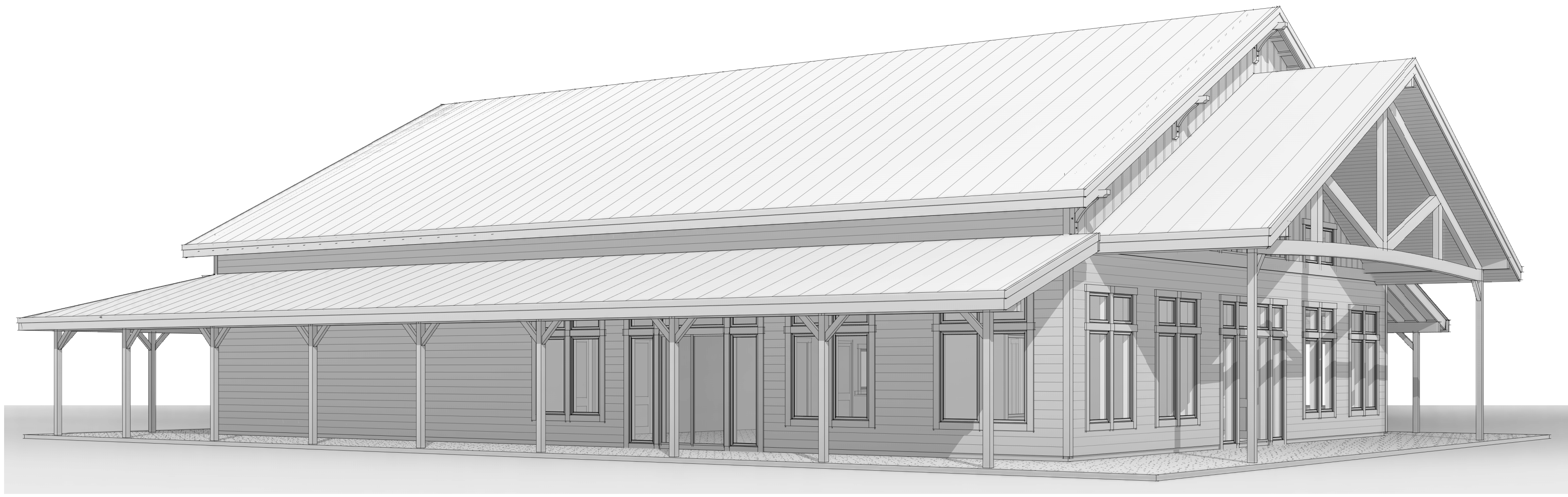
**TITLE SHEET &
GENERAL NOTES**

Drawn By
TL
10/4/2022 9:32:02 AM

No.	Date	Description

A-001

DISCLAIMER: ALL 3D IMAGES ARE AN APPROXIMATION ONLY. ALL 3D IMAGES ARE SHOWN FOR ILLUSTRATION PURPOSES ONLY. 2D DRAWINGS SHALL SUPERSEDE ALL ITEMS SHOWN ON 3D IMAGES. THIS SHEET IS PROVIDED AS A REPRESENTATION AND IS NOT FOR CONSTRUCTION.



11251 SE 232nd AVE



DAMASCUS, OR 97089

REVIVE AK LIFE CENTER

5021 O'MALLEY ROAD
ANCHORAGE, AK 99507

3D VIEWS - EXTERIOR

Drawn By
TL
10/4/2022 9:33:03
AM

Drawing Index
No. Date Description

A-002

DISCLAIMER: ALL 3D IMAGES ARE AN APPROXIMATION ONLY. ALL 3D IMAGES ARE SHOWN FOR ILLUSTRATION PURPOSES ONLY. 2D DRAWINGS SHALL SUPERSEDE ALL ITEMS SHOWN ON 3D IMAGES. THIS SHEET IS PROVIDED AS A REPRESENTATION AND IS NOT FOR CONSTRUCTION.

11251 SE 232nd AVE



DAMASCUS, OR 97089

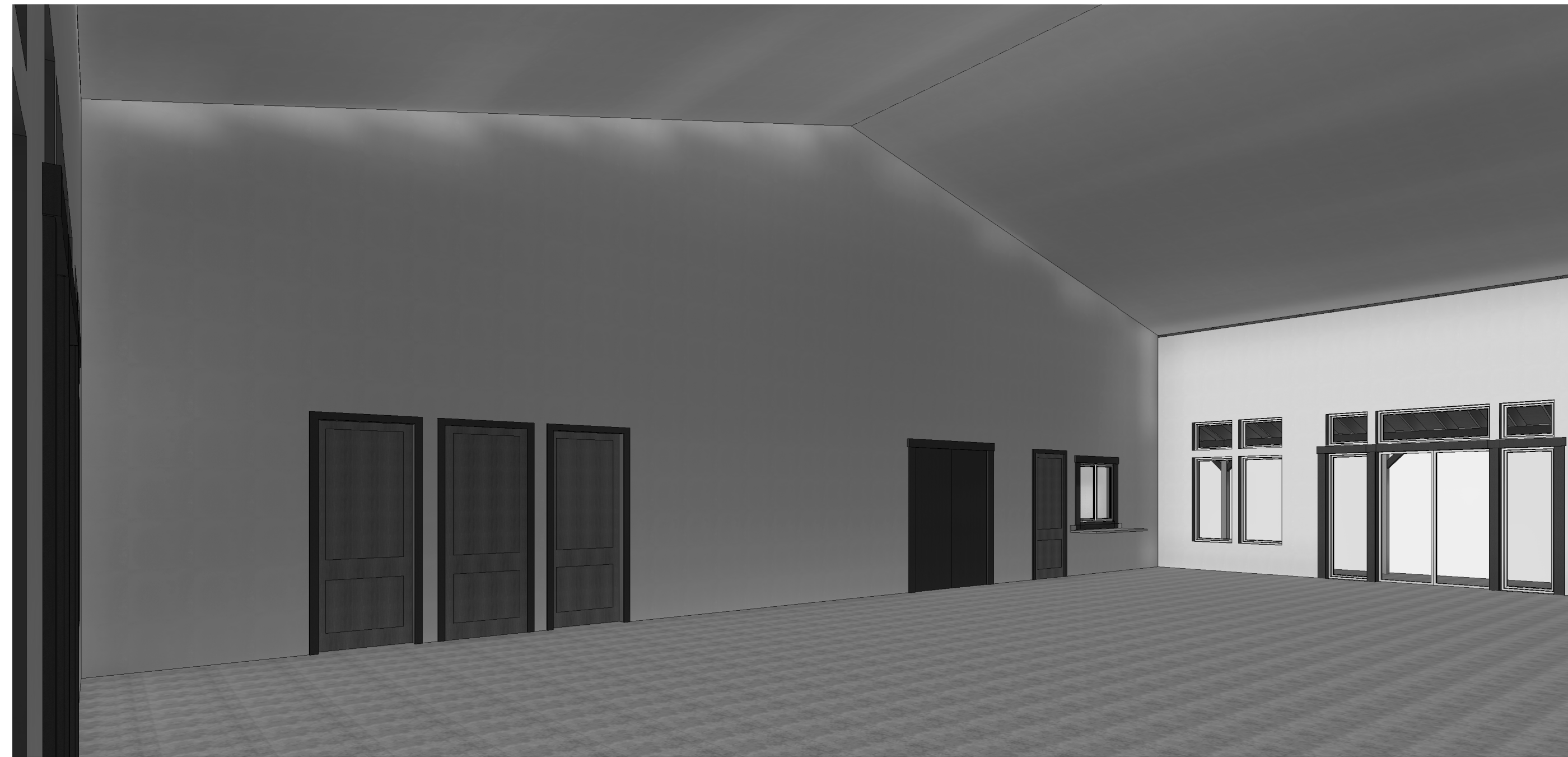
REVIVE AK LIFE CENTER
5021 O'MALLEY ROAD
ANCHORAGE, AK 99507

3D VIEWS - INTERIOR

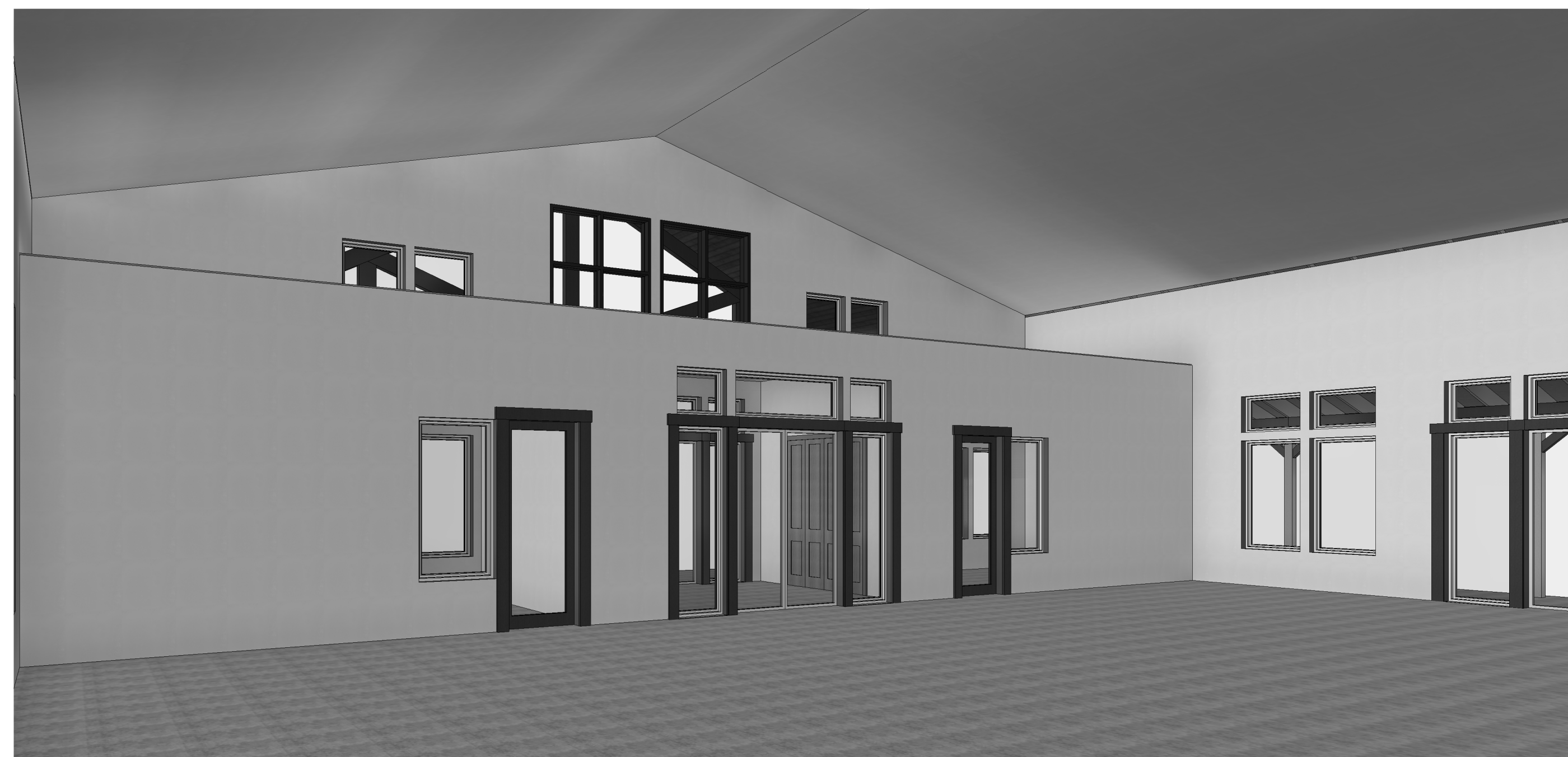
Drawn By
TL
10/4/2022 9:35:08 AM
Drawing Index

No. Date Description

A-003



1 INTERIOR VIEW AT GATHERING 1



3 INTERIOR VIE AT GATHERING 3



2 INTERIOR VIEW AT GATHERING 2

NOT FOR CONSTRUCTION

AREA - CONDITIONED SPACE	
NOTE: CONDITIONED SPACE MEASURED FROM EXTERIOR SURFACES OF EXTERIOR FRAMING HEAD CLEARANCE ABOVE 48"	
CONDITIONED	5040 SF
OUTDOOR	
COVERED PATIO	488 SF
COVERED SHED	2480 SF
	2968 SF
GRAND TOTAL	8008 SF

Room Schedule						
NOTE: ROOM AREA MEASURED FROM INTERIOR OF STUD WALL OR USEABLE SPACE						
Number	Name	Area	Floor Finish	Wall Finish	Ceiling	Height
MAIN LEVEL						
01	COVERED ENTRY	482 SF	CONCRETE	N/A	BY OTHERS	VARIABLES
02	COVERED SHED	826 SF	CONCRETE	N/A	BY OTHERS	VARIABLES
04	COVERED SHED	790 SF	CONCRETE	N/A	BY OTHERS	VARIABLES
04	COVERED SHED	826 SF	CONCRETE	N/A	BY OTHERS	VARIABLES
101	OFFICE	213 SF	CONCRETE	BY OTHERS	BY OTHERS	11' - 6 1/8"
102	CLT.	22 SF	CONCRETE	BY OTHERS	BY OTHERS	11' - 6 1/8"
103	VEST.	156 SF	CONCRETE	BY OTHERS	BY OTHERS	11' - 6 1/8"
104	CLT.	22 SF	CONCRETE	BY OTHERS	BY OTHERS	11' - 6 1/8"
105	OFFICE	213 SF	CONCRETE	BY OTHERS	BY OTHERS	11' - 6 1/8"
106	GATHERING	2111 SF	CONCRETE	BY OTHERS	BY OTHERS	VARIABLES
107	WOMEN	119 SF	CONCRETE	BY OTHERS	BY OTHERS	16' - 11 1/8"
108	JAN.	11 SF	CONCRETE	BY OTHERS	BY OTHERS	16' - 11 1/8"
109	MEN	141 SF	CONCRETE	BY OTHERS	BY OTHERS	16' - 11 1/8"
110	PANTRY	421 SF	CONCRETE	BY OTHERS	BY OTHERS	16' - 11 1/8"
111	COOLER	86 SF	CONCRETE	BY OTHERS	BY OTHERS	16' - 11 1/8"
112	FRZR.	31 SF	CONCRETE	BY OTHERS	BY OTHERS	16' - 11 1/8"
113	COOLER	80 SF	CONCRETE	BY OTHERS	BY OTHERS	16' - 11 1/8"
114	FRZR.	31 SF	CONCRETE	BY OTHERS	BY OTHERS	16' - 11 1/8"
115	KITCHEN	278 SF	CONCRETE	BY OTHERS	BY OTHERS	16' - 11 1/8"
116	MECH.	203 SF	CONCRETE	BY OTHERS	BY OTHERS	16' - 11 1/8"
		7660 SF				

Door Schedule Ground Level						
SEE SCHEDULES SHEET FOR DOOR TYPES AND COMPLETE SCHEDULE						
Mark	Type	Width	Height	Operation	Provided By	Comments
MAIN LEVEL						
101	C	3'-0"	8'-0"	SWING	OTHERS	TEMPERED GLAZING
102	D	6'-0"	8'-0"	BIFOLD	OTHERS	
103	A	6'-0"	8'-0"	DOUBLE SWING	OTHERS	TEMPERED GLAZING
103A	A	6'-0"	8'-0"	DOUBLE SWING	OTHERS	TEMPERED GLAZING
104	D	6'-0"	8'-0"	BIFOLD	OTHERS	
105	C	3'-0"	8'-0"	SWING	OTHERS	TEMPERED GLAZING
106	A	6'-0"	8'-0"	DOUBLE SWING	OTHERS	TEMPERED GLAZING
106A	B	6'-0"	8'-0"	DOUBLE SWING	OTHERS	
106B	B	6'-0"	8'-0"	DOUBLE SWING	OTHERS	
106C	A	6'-0"	8'-0"	DOUBLE SWING	OTHERS	TEMPERED GLAZING
107	B	3'-0"	8'-0"	SWING	OTHERS	
108	B	3'-0"	8'-0"	SWING	OTHERS	
109	B	3'-0"	8'-0"	SWING	OTHERS	
110	B	3'-0"	8'-0"	SWING	OTHERS	
110A	C	10'-0"	10'-0"	OVERHEAD	OTHERS	
110B	B	3'-0"	8'-0"	SWING	OTHERS	
116	B	3'-0"	8'-0"	SWING	OTHERS	
D118	ZZ	3'-0"	8'-0"	BATHROOM		
D119	ZZ	2'-6"	6'-0"	BATHROOM		
D120	ZZ	2'-6"	6'-0"	BATHROOM		
D122	ZZ	3'-0"	6'-0"	BATHROOM		

Window Schedule Main Level								
SEE SCHEDULES SHEET FOR WINDOW TYPES AND COMPLETE SCHEDULE								
Mark	Type	Rough Opening Width	Rough Opening Height	Head Height (BTM of HDR)	Sill Height (TOP OF SILL)	Operation	Provided By	Comments
MAIN LEVEL								
101	A	3'-0"	6'-0"	0'-0"	2'-0"	PICTURE	OTHERS	
101.1	A	3'-0"	2'-0"	10'-5 1/2"	8'-5 1/2"	PICTURE	OTHERS	
102	A	3'-0"	6'-0"	0'-0"	2'-0"	PICTURE	OTHERS	
102.1	A	3'-0"	2'-0"	10'-5 1/2"	8'-5 1/2"	PICTURE	OTHERS	
103	A	9'-0"	6'-0"	0'-0"	2'-0"	PICTURE	OTHERS	
103.1	A	3'-0"	2'-0"	10'-5 1/2"	8'-5 1/2"	PICTURE	OTHERS	
104	A	3'-0"	6'-0"	0'-0"	2'-0"	PICTURE	OTHERS	
104.1	A	3'-0"	2'-0"	10'-5 1/2"	8'-5 1/2"	PICTURE	OTHERS	
105	A	2'-6"	8'-0"	0'-0"	0'	PICTURE	OTHERS	TEMPERED
105.1	A	2'-6"	2'-0"	10'-5 1/2"	8'-5 1/2"	PICTURE	OTHERS	
105.2	A	6'-0"	2'-0"	10'-5 1/2"	8'-5 1/2"	PICTURE	OTHERS	
106	A	2'-6"	8'-0"	0'-0"	0'	PICTURE	OTHERS	TEMPERED
106.1	A	2'-6"	2'-0"	10'-5 1/2"	8'-5 1/2"	PICTURE	OTHERS	
107	A	3'-0"	6'-0"	0'-0"	2'-0"	PICTURE	OTHERS	
107.1	A	3'-0"	2'-0"	10'-5 1/2"	8'-5 1/2"	PICTURE	OTHERS	
107.1.1	A	2'-6"	2'-0"	10'-5 1/2"	8'-5 1/2"	PICTURE	OTHERS	
107.2	A	6'-0"	2'-0"	10'-5 1/2"	8'-5 1/2"	PICTURE	OTHERS	
108	A	3'-0"	6'-0"	0'-0"	2'-0"	PICTURE	OTHERS	
108.1	A	3'-0"	2'-0"	10'-5 1/2"	8'-5 1/2"	PICTURE	OTHERS	
108.1.1	A	2'-6"	2'-0"	10'-5 1/2"	8'-5 1/2"	PICTURE	OTHERS	
109	A	3'-0"	6'-0"	0'-0"	2'-0"	PICTURE	OTHERS	
109.1	A	3'-0"	2'-0"	10'-5 1/2"	8'-5 1/2"	PICTURE	OTHERS	
110	A	9'-0"	6'-0"	0'-0"	2'-0"	PICTURE	OTHERS	
110.1	A	3'-0"	2'-0"	10'-5 1/2"	8'-5 1/2"	PICTURE	OTHERS	
111	A	3'-0"	6'-0"	0'-0"	2'-0"	PICTURE	OTHERS	
111.1	A	3'-0"	2'-0"	10'-5 1/2"	8'-5 1/2"	PICTURE	OTHERS	
112	A	3'-0"	6'-0"	0'-0"	2'-0"	PICTURE	OTHERS	
112.1	A	3'-0"	2'-0"	10'-5 1/2"	8'-5 1/2"	PICTURE	OTHERS	
113	A	3'-0"	6'-0"	0'-0"	2'-0"	PICTURE	OTHERS	
113.1	A	3'-0"	2'-0"	10'-5 1/2"	8'-5 1/2"	PICTURE	OTHERS	
114	A	3'-0"	6'-0"	0'-0"	2'-0"	PICTURE	OTHERS	
114.1	A	3'-0"	2'-0"	10'-5 1/2"	8'-5 1/2"	PICTURE	OTHERS	
115	A	2'-6"	8'-0"	0'-0"	0'	PICTURE	OTHERS	TEMPERED
115.1	A	2'-6"	2'-0"	10'-6 53/256"	8'-6 53/256"	PICTURE	OTHERS	
115.2	A	6'-0"	2'-0"	10'-6 53/256"	8'-6 53/256"	PICTURE	OTHERS	
116	A	2'-6"	8'-0"	0'-0"	0'	PICTURE	OTHERS	TEMPERED
116.1	A	2'-6"	2'-0"	10'-6 53/256"	8'-6 53/256"	PICTURE	OTHERS	
117	A	3'-0"	6'-0"	0'-0"	2'-0"	PICTURE	OTHERS	
117.1	A	3'-0"	2'-0"	10'-6 53/256"	8'-6 53/256"	PICTURE	OTHERS	
118	A	3'-0"	6'-0"	0'-0"	2'-0"	PICTURE	OTHERS	
118.1	A	3'-0"	2'-0"	10'-6 53/256"	8'-6 53/256"	PICTURE	OTHERS	
119	A	4'-0"	4'-0"	T-6"	3'-6"	GLIDING	OTHERS	TEMPERED
120	A	3'-0"	6'-0"	0'-0"	2'-0"	PICTURE	OTHERS	
120.1	A	3'-0"	2'-0"	10'-5 1/2"	8'-5 1/2"	PICTURE	OTHERS	
121	A	3'-0"	6'-0"	0'-0"	2'-0"	PICTURE	OTHERS	
121.1	A	3'-0"	2'-0"	10'-5 1/2"	8'-5 1/2"	PICTURE	OTHERS	TEMPERED
122	A	2'-6"	8'-0"	0'-0"	0'	PICTURE	OTHERS	
122.1	A	2'-6"	2'-0"	10'-5 1/2"	8'-5 1/2"	PICTURE	OTHERS	
122.2	A	6'-0"	2'-0"	10'-5 1/2"	8'-5 1/2"	PICTURE	OTHERS	
123	A	2'-6"	8'-0"	0'-0"	0'	PICTURE	OTHERS	TEMPERED
123.1	A	2'-6"	2'-0"	10'-5 1/2"	8'-5 1/2"	PICTURE	OTHERS	
124	A	3'-0"	6'-0"	0'-0"	2'-0"	PICTURE	OTHERS	
124.1	A	3'-0"	2'-0"	10'-5 1/2"	8'-5 1/2"	PICTURE	OTHERS	
125	A	3'-0"	6'-0"	0'-0"	2'-0"	PICTURE	OTHERS	
125.1	A	3'-0"	2'-0"	10'-5 1/2"	8'-5 1/2"	PICTURE	OTHERS	
126	A	3'-0"	6'-0"	0'-0"	2'-0"	PICTURE	OTHERS	
126.1	A	3'-0"	2'-0"	10'-5 1/2"	8'-5 1/2"	PICTURE	OTHERS	
127	A	3'-0"	6'-0"	0'-0"	2'-0"	PICTURE	OTHERS	
127.1	A	3'-0"	2'-0"	10'-5 1/2"	8'-5 1/2"	PICTURE	OTHERS	
130	A	3'-0"	6'-0"	0'-0"	2'-0"	PICTURE	OTHERS	TEMPERED
130.1	A	2'-6"	8'-0"	0'-0"	0'	PICTURE	OTHERS	TEMPERED
131	A	3'-0"	6'-0"	0'-0"	2'-0"	PICTURE	OTHERS	TEMPERED

10/4/2022 9:35:13 AM

GROUND LEVEL
3/16" = 1'-0"



DAMASCUS, OR 97089

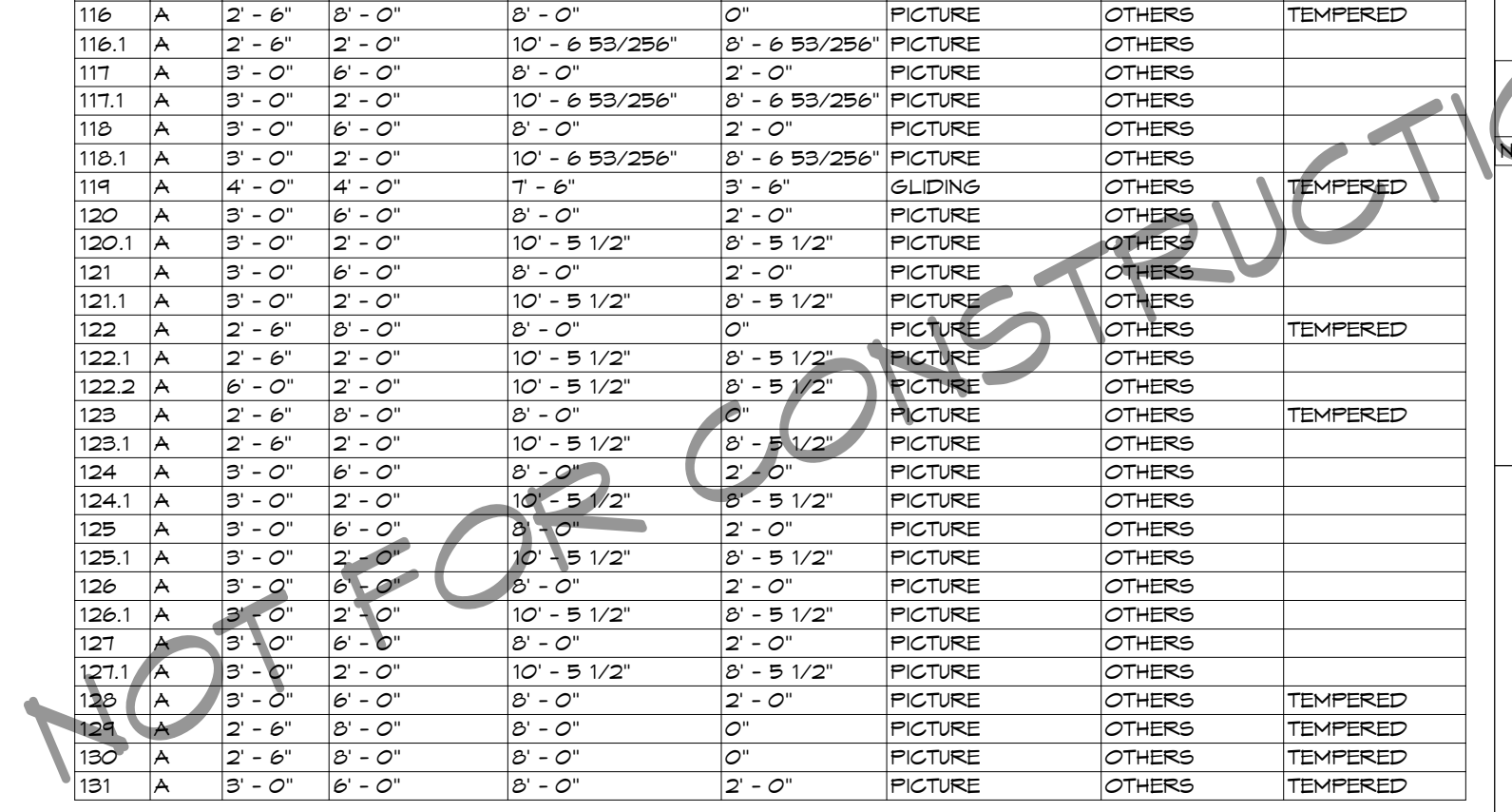
REVIVE AK LIFE CENTER
5021 OMALLEY ROAD
ANCHORAGE, AK 99507

MAIN LEVEL

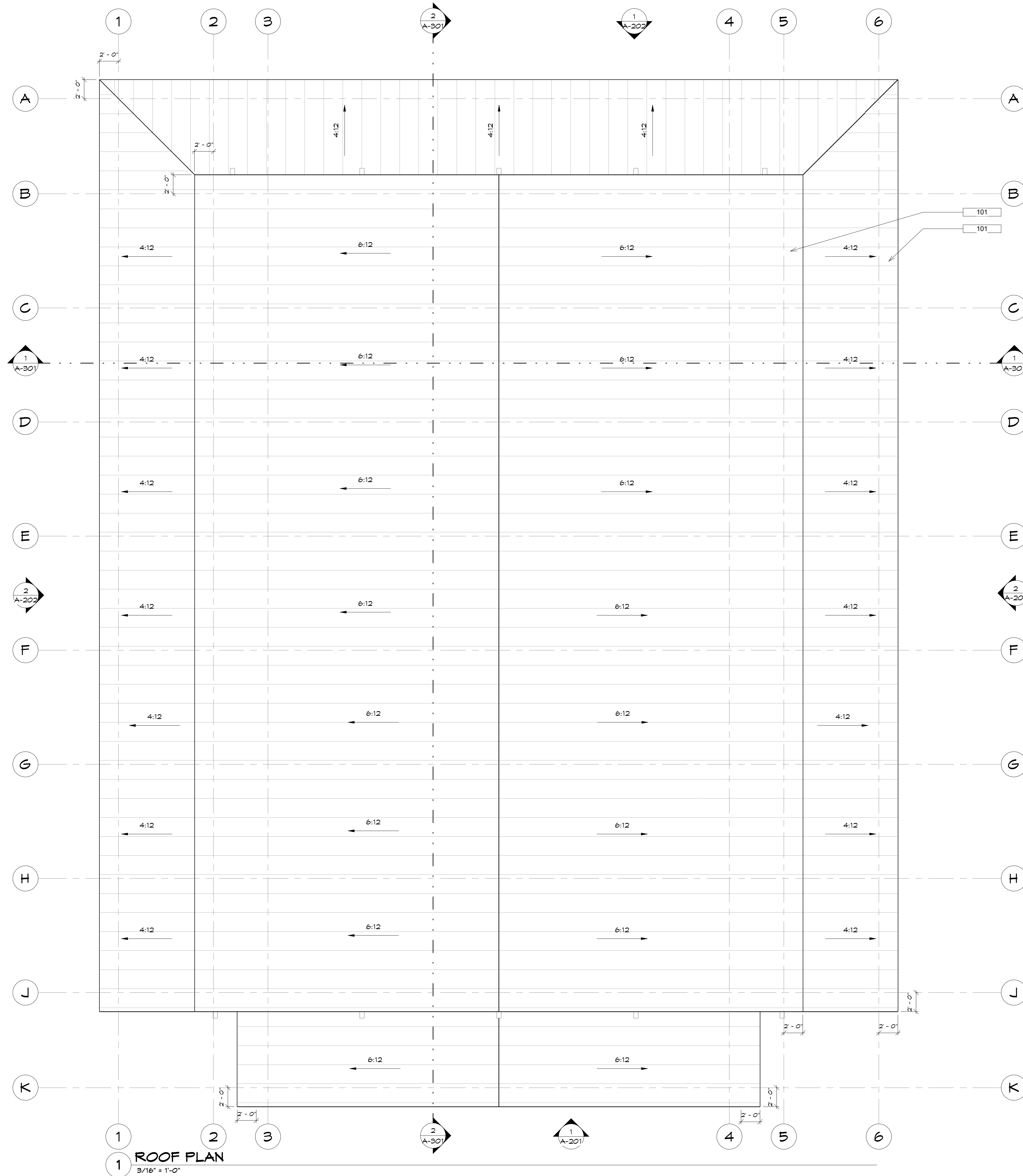
Drawn By
TL
10/4/2022 9:35:13 AM

Drawing Index
No. Date Description

A-101



KEYNOTES	
101	METAL STANDING BEAM ROOFING MATERIAL w/ SYNTHETIC UNDERLAYMENT, FBO



11251 SE 232nd AVE



DAMASCUS, OR 97089

REVIVE AK LIFE CENTER
 5021 O'MALLEY ROAD
 ANCHORAGE, AK 99507

ROOF PLAN

Drawn By
 TL
 10/4/2022 9:35:15 AM

No.	Date	Description

A-102

NOT FOR CONSTRUCTION

KEYNOTES	
101	METAL STANDING SEAM ROOFING MATERIAL w/ SYNTHETIC UNDERLAYMENT, FBO
201	2 STEP COLOR SELECT FASCIA, FB DCS
202	COLOR SELECT CORNER TRIM, FB DCS
203	WOODTONE RUSTIC BOARD & BATT SIDING w/NRB, FB DCS
205	COLOR SELECT BELLY BAND, FB DCS
206	2 CORBEL, FB DCS
207	WOODTONE LAP SIDING w/ NRB, FB DCS
208	COLOR SELECT WINDOW TRIM, FB DCS
209	COLOR SELECT DOOR TRIM, FB DCS
210	KNEE BRACE, FB DCS
211	TIMBER TRUSS, FB DCS

11251 SE 232nd AVE



DAMASCUS, OR 97089

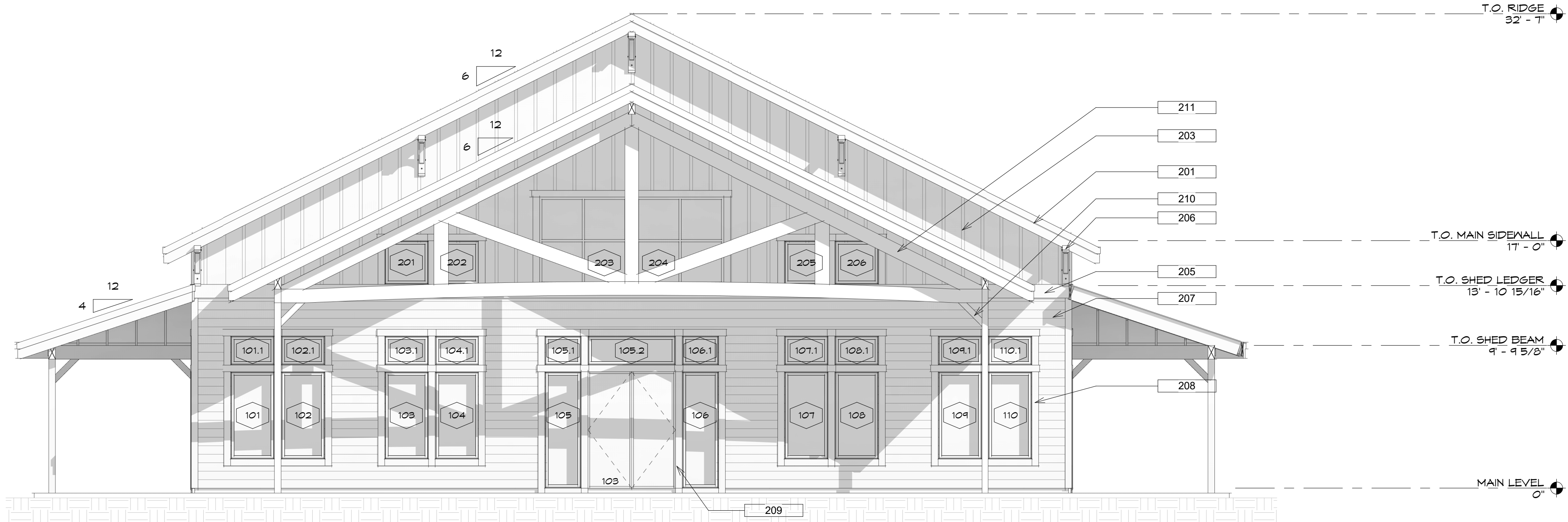
REVIVE AK LIFE CENTER

5021 O'MALLEY ROAD
ANCHORAGE, AK 99507

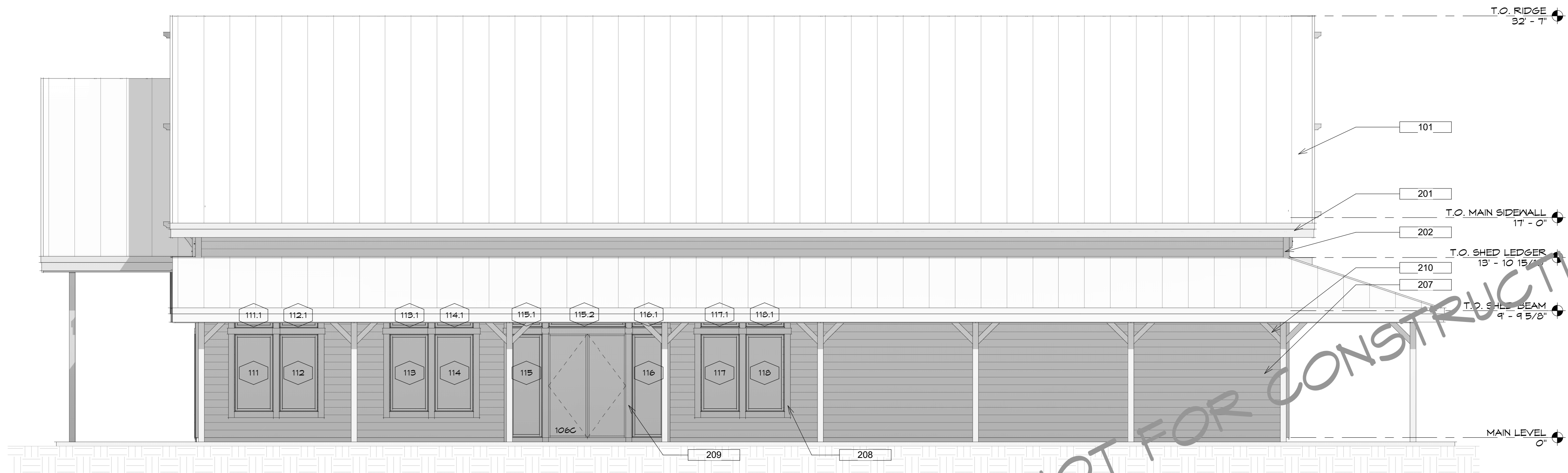
ELEVATIONS

Drawn By
TL
10/4/2022 9:35:54 AM
Drawing Index
No. Date Description

A-201



1 FRONT
3/16" = 1'-0"



2 RIGHT
3/16" = 1'-0"

NOT FOR CONSTRUCTION

KEYNOTES	
201	2 STEP COLOR SELECT FASCIA, FB DCS
202	COLOR SELECT CORNER TRIM, FB DCS
203	WOODTONE RUSTIC BOARD & BATT SIDING o/WRB, FB DCS
205	COLOR SELECT BELLY BAND, FB DCS
206	2 COREBEL, FB DCS
207	WOODTONE LAP SIDING o/WRB, FB DCS
209	COLOR SELECT DOOR TRIM, FB DCS

11251 SE 232nd AVE



DAMASCUS, OR 97089

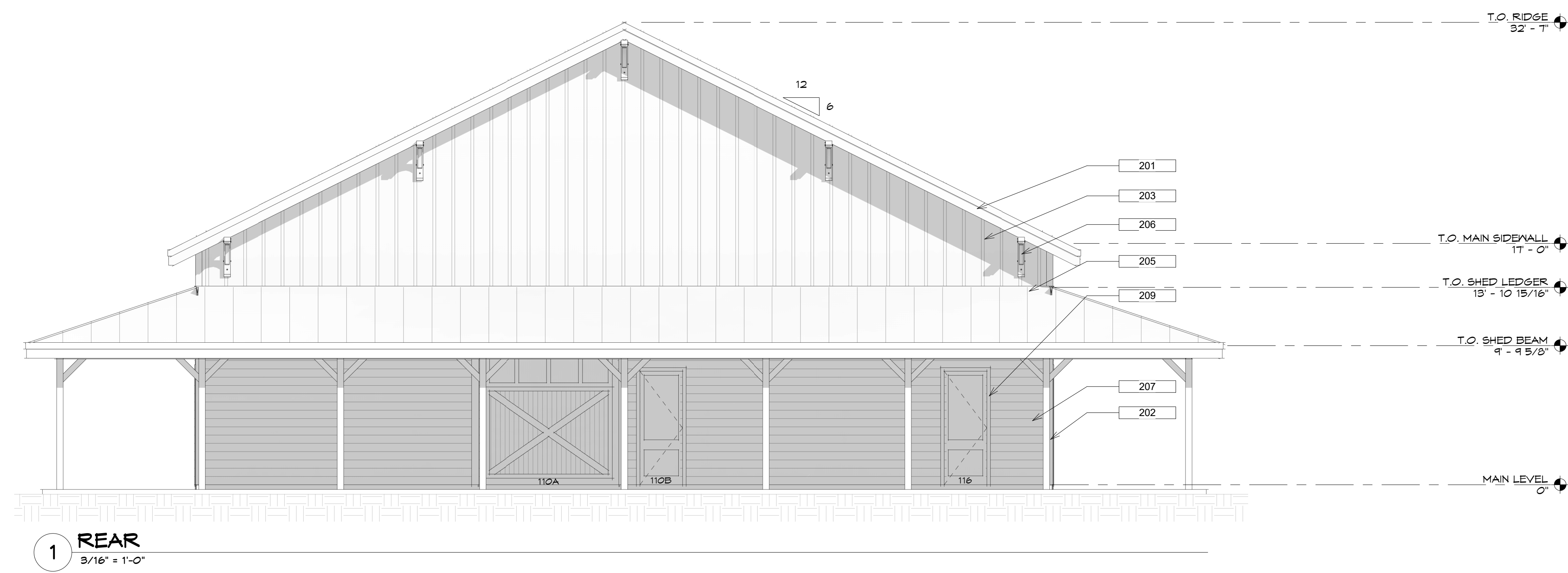
REVIVE AK LIFE CENTER
5021 O'MALLEY ROAD
ANCHORAGE, AK 99507

ELEVATIONS

Drawn By
TL
10/4/2022 9:36:25 AM

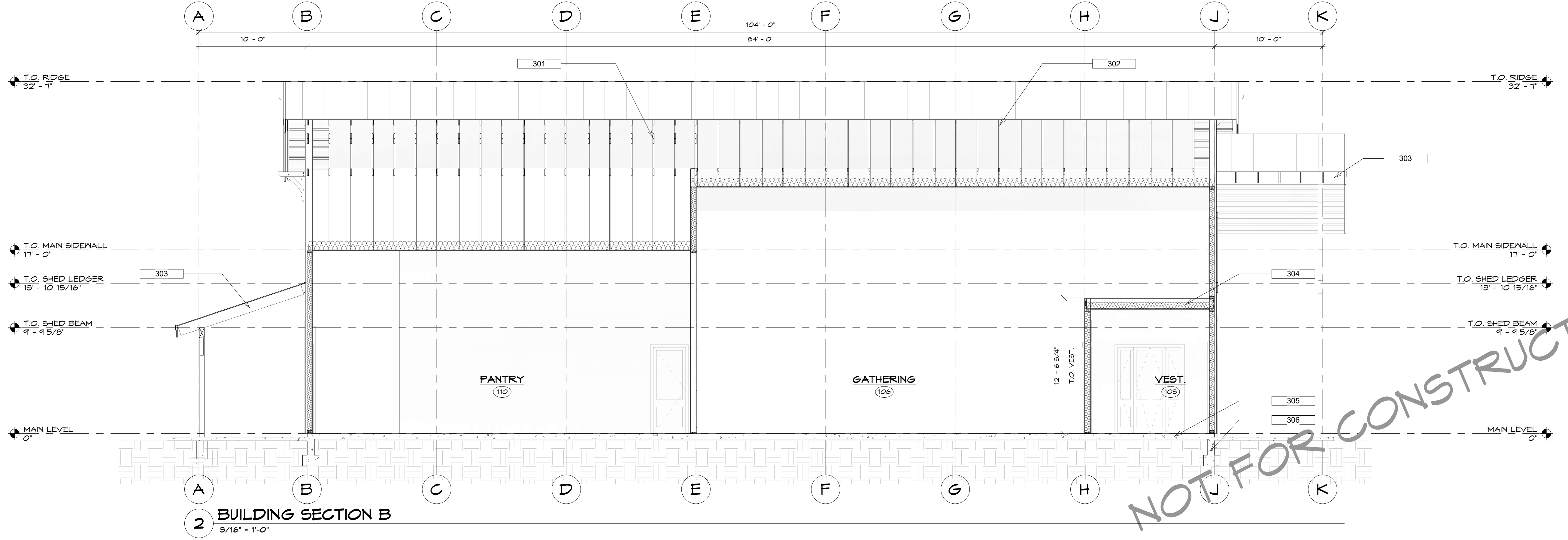
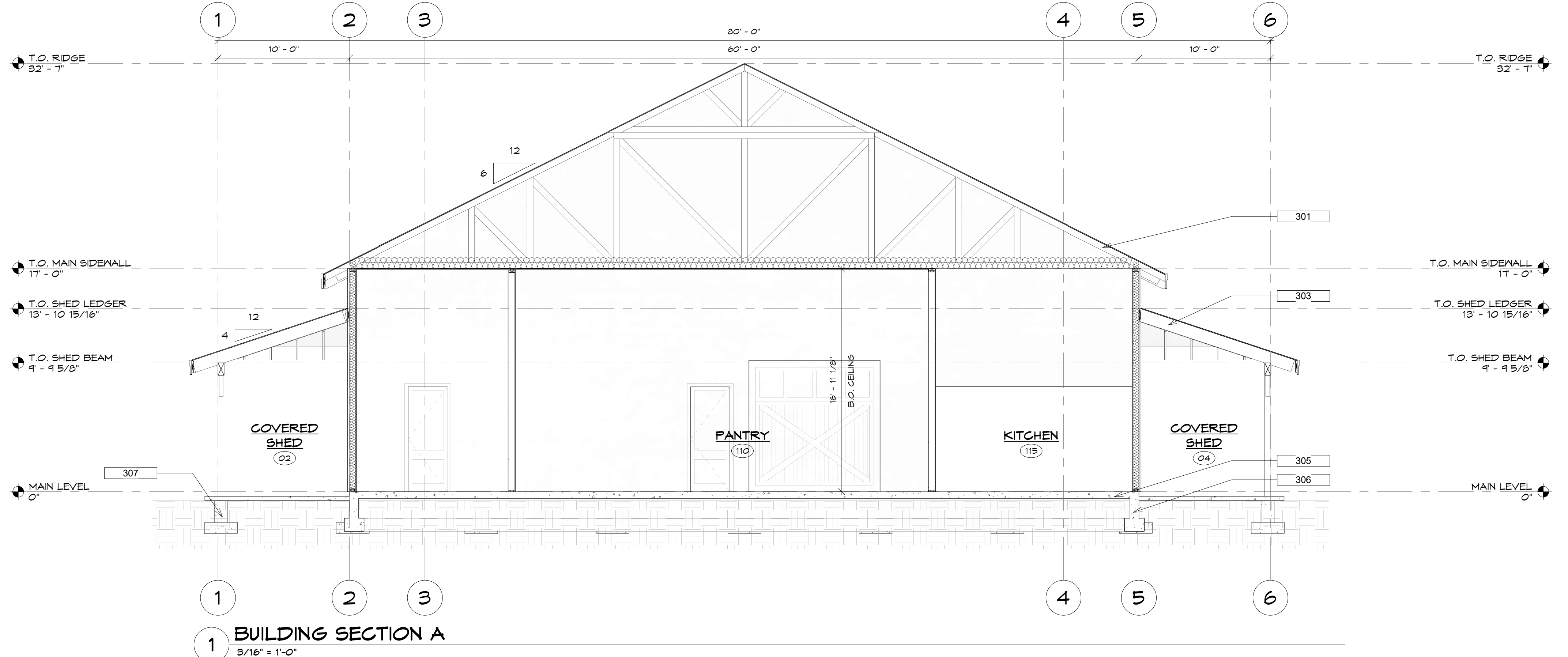
Drawing Index
No. Date Description

A-202



NOT FOR CONSTRUCTION

KEYNOTES	
301	PRE-MANUF. FLAT BOTTOM CHORD TRUSS PER STRUCT.
302	PRE-MANUF. SCISSOR TRUSS PER STRUCT.
303	2x RAFTERS PER STRUCT.
304	2x CEILING JOISTS PER STRUCT.
305	CONC. SLAB PER STRUCT.
306	STEM-WALL w/ TRENCH FOOTING PER STRUCT.
307	SPREAD FOOTING PER STRUCT.



11251 SE 232nd AVE



DAMASCUS, OR 97089

REVIVE AK LIFE CENTER
5021 O'MALLEY ROAD
ANCHORAGE, AK 99507

SECTIONS

Drawn By
TL
10/4/2022 9:36:28 AM

Drawing Index		
No.	Date	Description

A-301

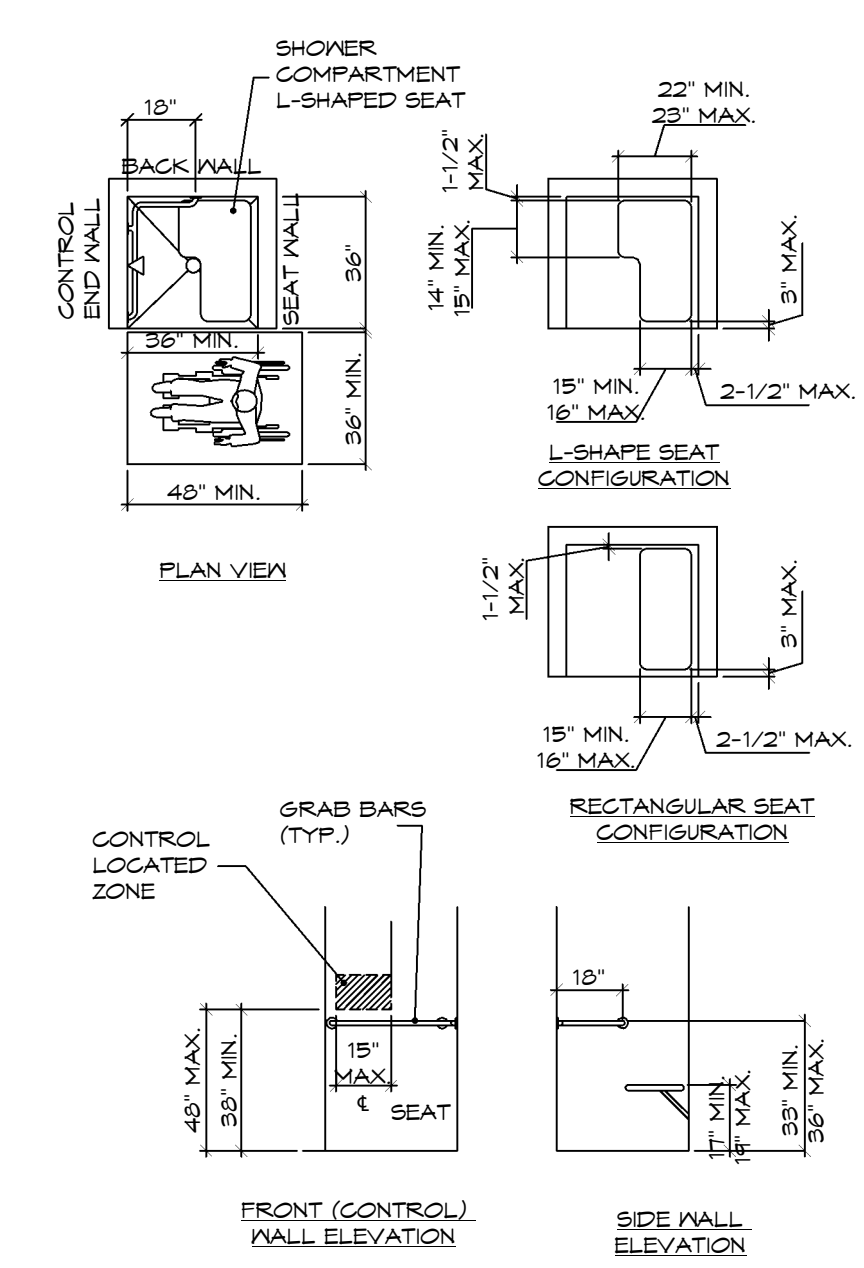
NOT FOR CONSTRUCTION



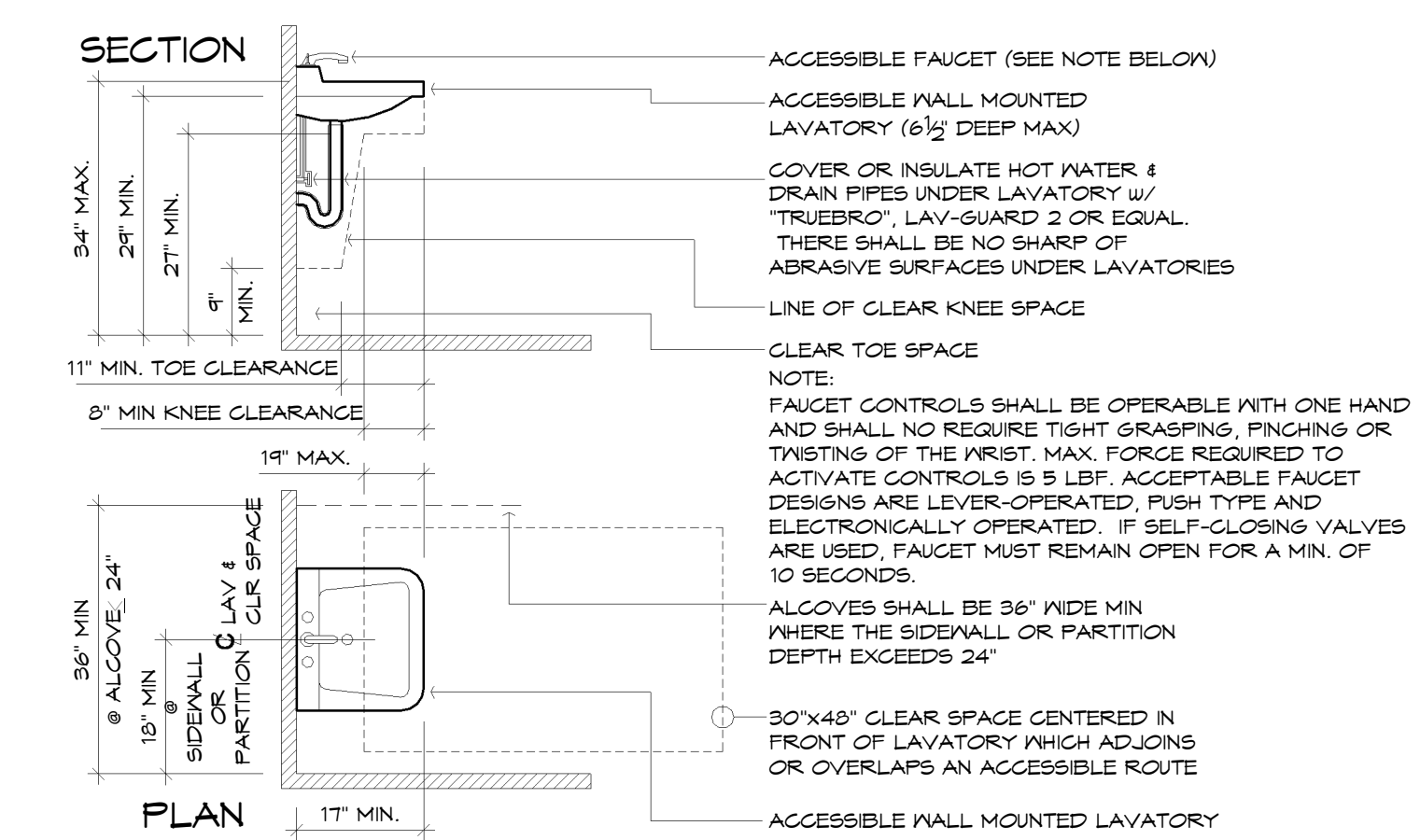
**ACCESSIBILITY
DETAILS**

Drawn By
XX
10/4/2022 9:36:29 AM

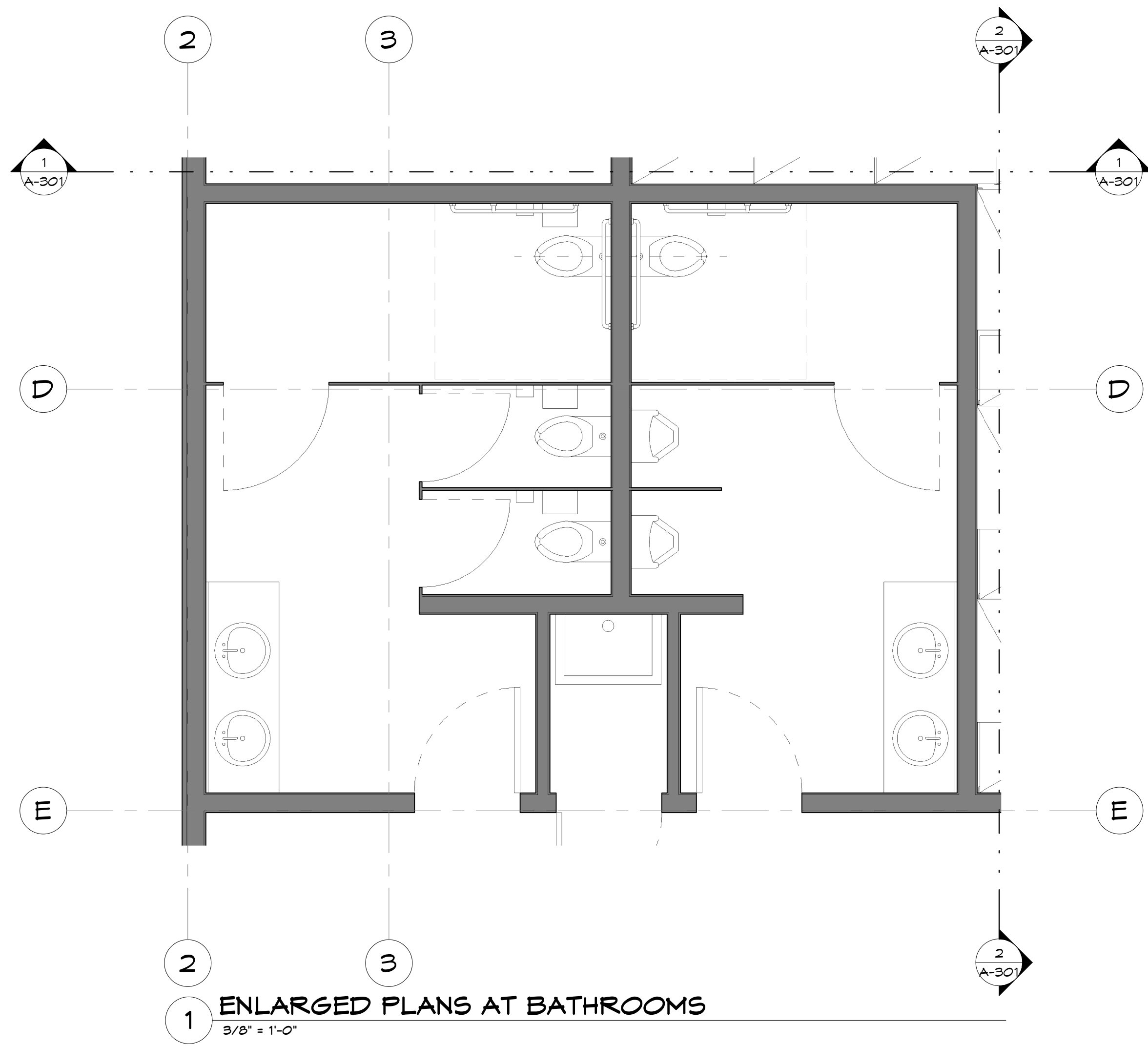
Drawing Index
No. Date Description



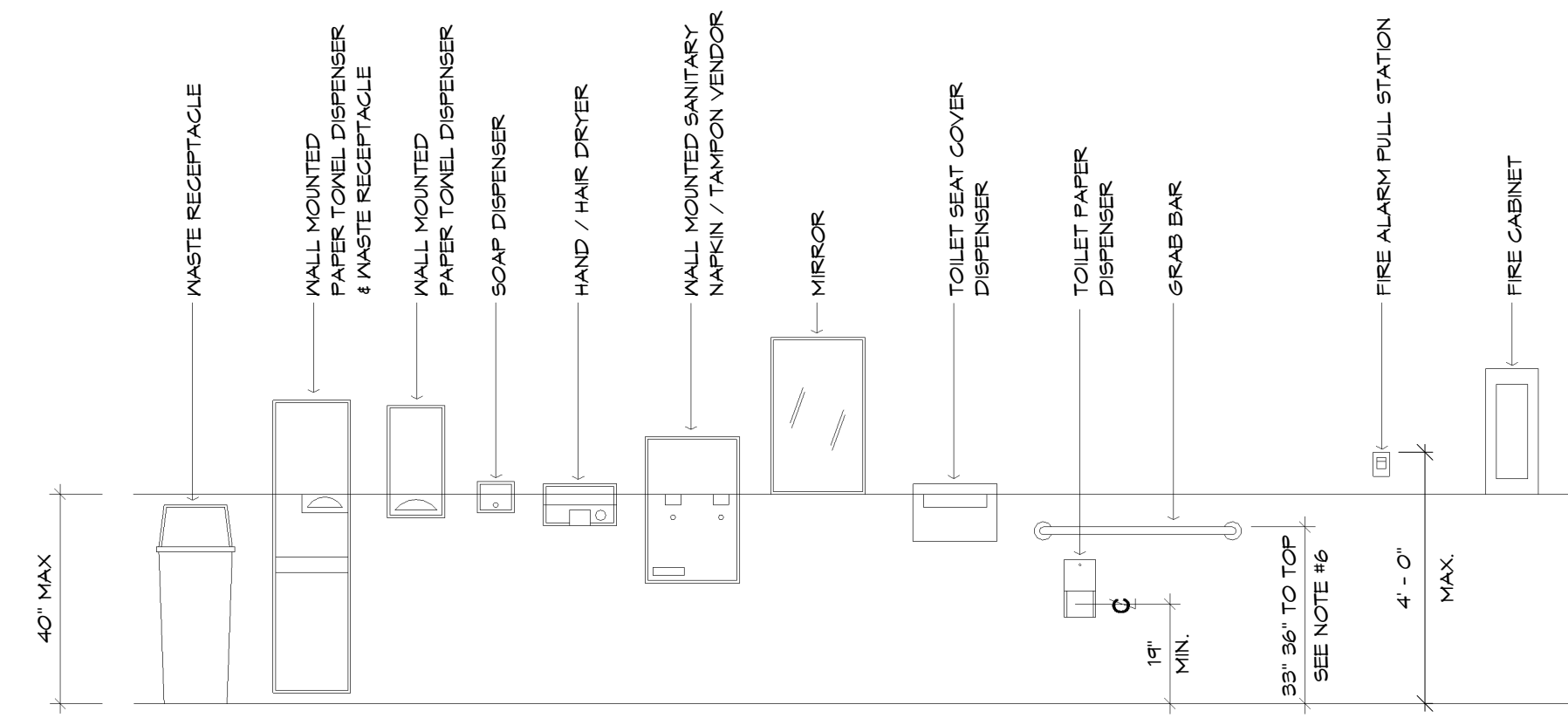
2 ACCESSIBLE TRANSFER TYPE SHOWER
1/2" = 1'-0"



5 ACCESSIBLE LAVATORY
1/2" = 1'-0"



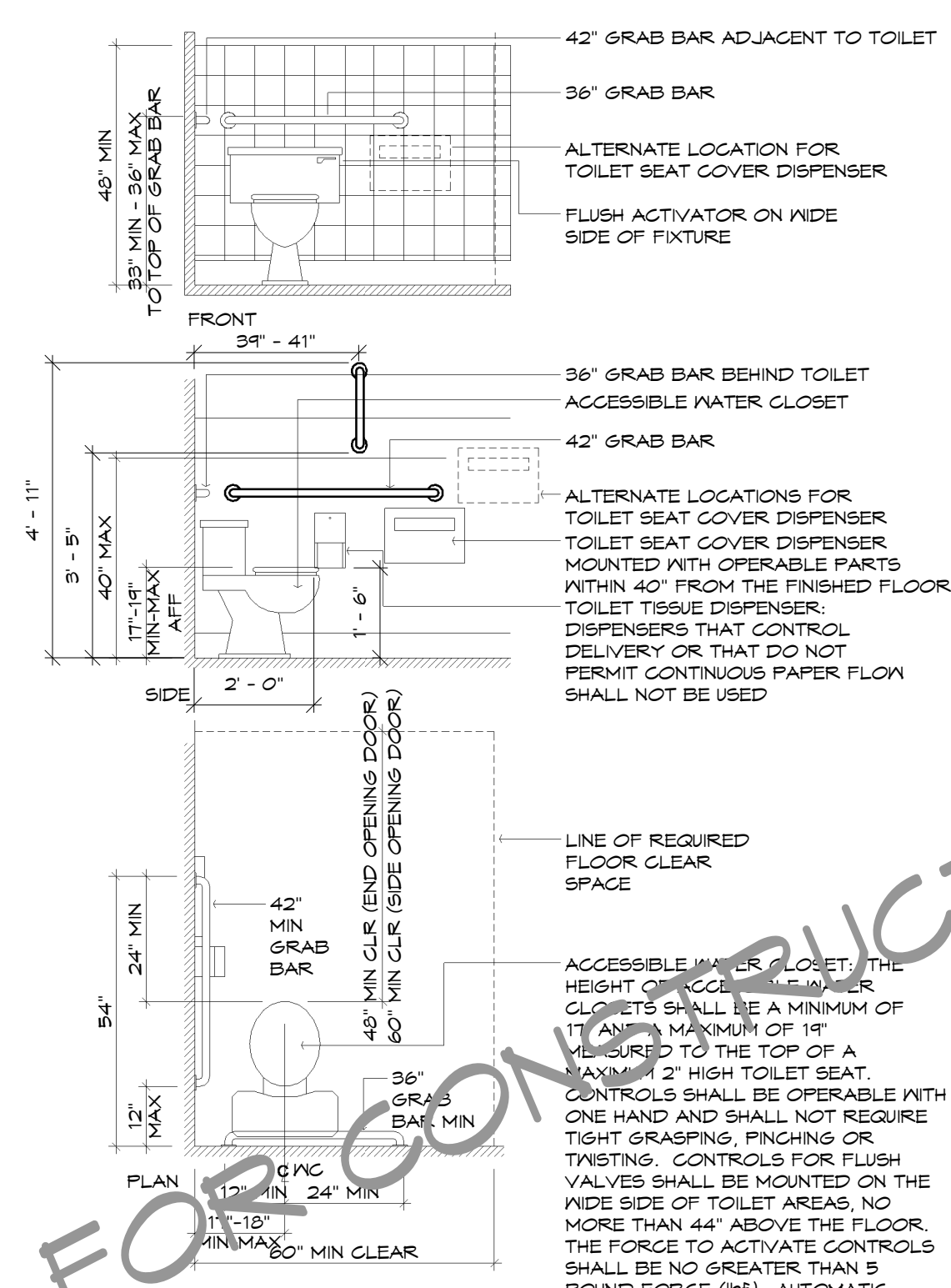
ENLARGED PLANS AT BATHROOMS
3/8" = 1'-0"



4 TOILET FACILITY ACCESSORY MOUNTING HEIGHTS
3/8" = 1'-0"

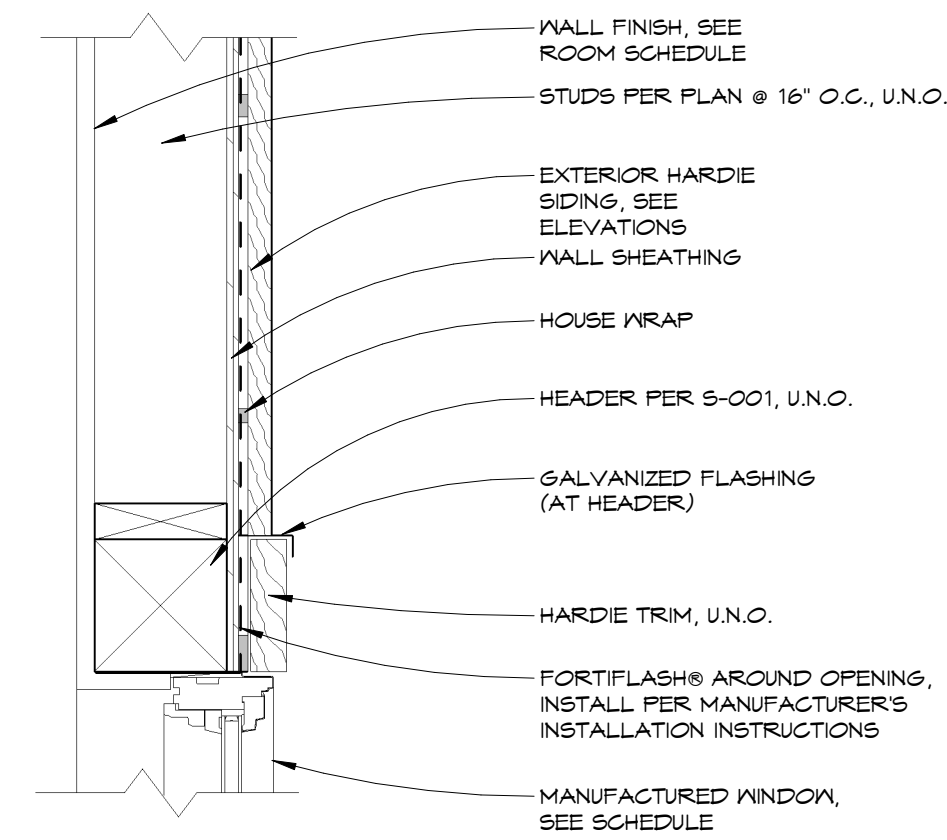
TOILET FACILITY ACCESSORY NOTES:

- MIRRORS SHALL BE MOUNTED WITH THE BOTTOM EDGE OF THE REFLECTING SURFACE NO HIGHER THAN 40" FROM THE FLOOR. (CBC 11B-603.3)
- IF MEDICINE CABINETS ARE PROVIDED, AT LEAST ONE SHALL BE LOCATED WITH A USABLE SHELF NO HIGHER THAN 44" ABOVE THE FLOOR. A CLEAR FLOOR SPACE 30"x48" SHALL BE PROVIDED IN FRONT OF THE MEDICINE CABINET TO ALLOW FOR A FORWARD OR PARALLEL APPROACH. (CBC 11B-603.5)
- WHERE TOWEL, SANITARY NAPKIN, WASTE RECEPTACLES, DISPENSERS, AND OTHER EQUIPMENT AND CONTROLS ARE PROVIDED, AT LEAST ONE OF EACH TYPE SHALL BE LOCATED ON AN ACCESSIBLE ROUTE, WITH ALL OPERABLE PARTS, INCLUDING COIN SLOTS, WITHIN 40" OF THE FINISHED FLOOR. (CBC 11B-603.5). FOR CONTROL & OPERATING MECHANISM INFO., SEE DETAIL.
- TOILET TISSUE DISPENSERS SHALL BE LOCATED ON THE WALL SO THAT THE CENTERLINE IS WITHIN 1'-4" FROM THE FRONT EDGE OF THE TOILET SEAT, MOUNTED BELOW THE GRAB BAR, AT A HEIGHT OF 19". DISPENSERS THAT CONTROL DELIVERY, OR THAT DO NOT PERMIT CONTINUOUS PAPER FLOW SHALL NOT BE USED. (CBC 11B-604.7)
- WHERE LOCKERS ARE PROVIDED FOR PUBLIC, CLIENTS, EMPLOYEES, MEMBERS OR PARTICIPANTS, AT LEAST ONE LOCKER AND NOT LESS THAN 1 PERCENT OF ALL LOCKERS SHALL BE MADE ACCESSIBLE TO PERSONS WITH DISABILITIES. A PATH OF TRAVEL NOT LESS THAN 36" IN CLEAR WIDTH SHALL BE PROVIDED TO THESE LOCKERS. (CBC 11B-222)
- GRAB BARS SHALL COMPLY WITH CBC 11B-604.5. SEE DETAIL.



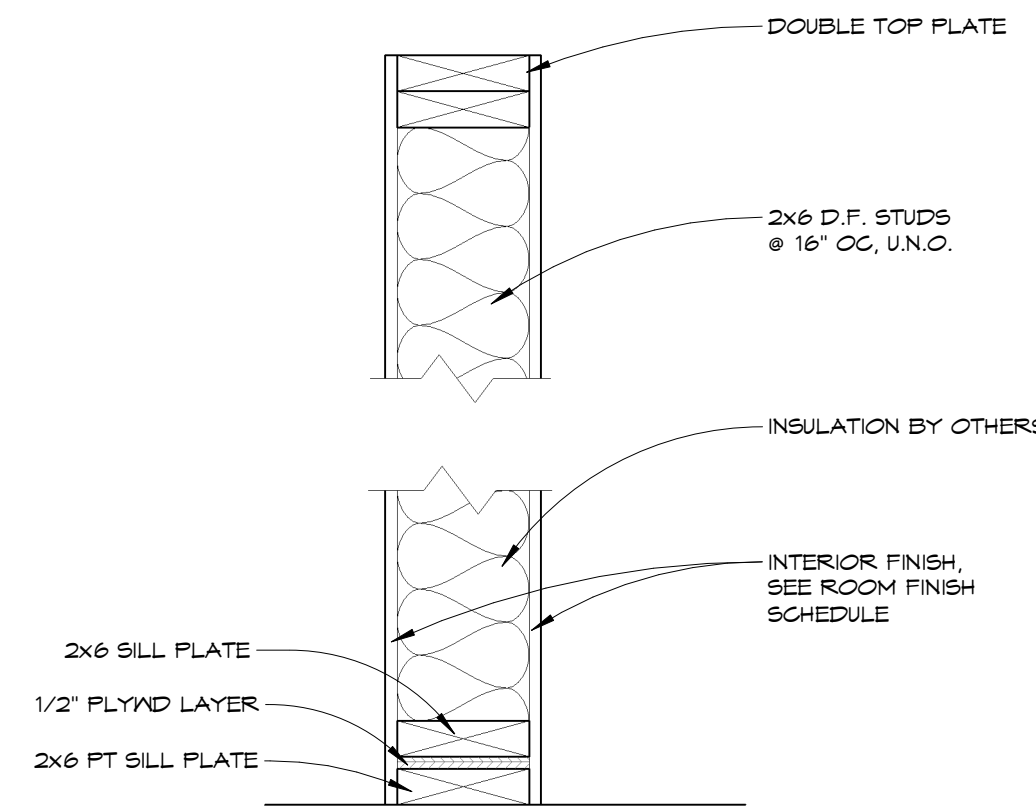
3 ACCESSIBLE TOILET
3/8" = 1'-0"

NOT FOR CONSTRUCTION

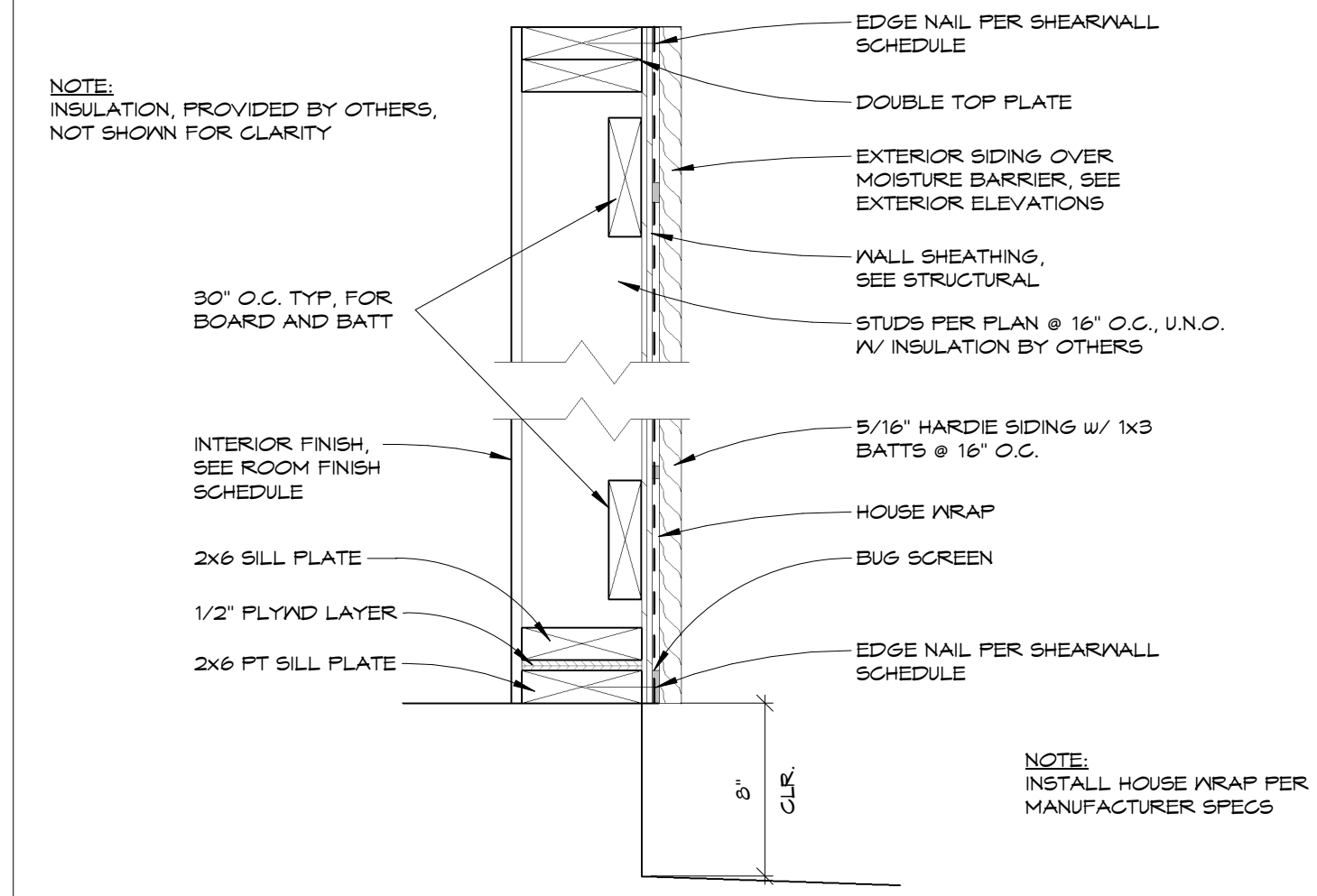


NOTE:
INSULATION, PROVIDED BY OTHERS,
NOT SHOWN FOR CLARITY.

9 WINDOW HEADER
1 1/2" = 1'-0"



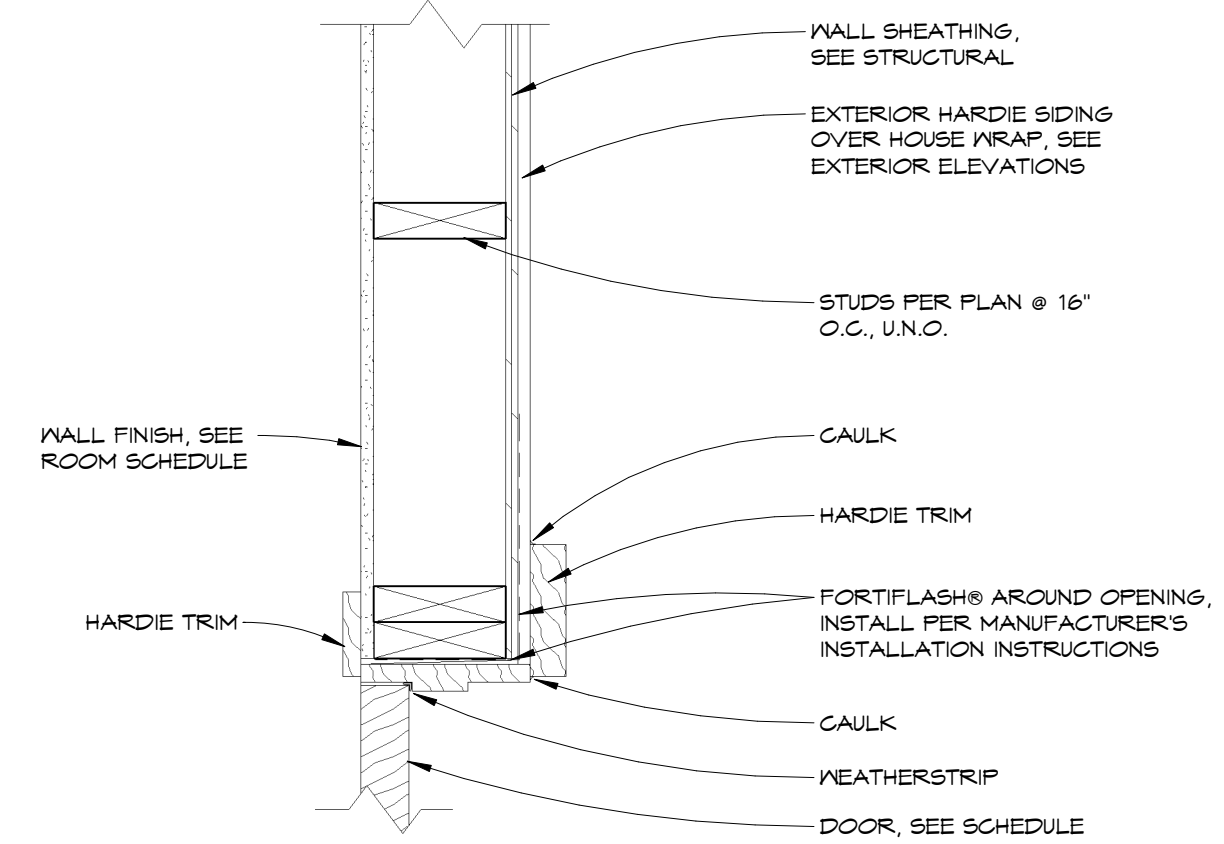
5 WALL TYPE - X6I
1 1/2" = 1'-0"



NOTE:
INSULATION, PROVIDED BY OTHERS,
NOT SHOWN FOR CLARITY.

NOTE:
INSTALL HOUSE WRAP PER
MANUFACTURER SPECS

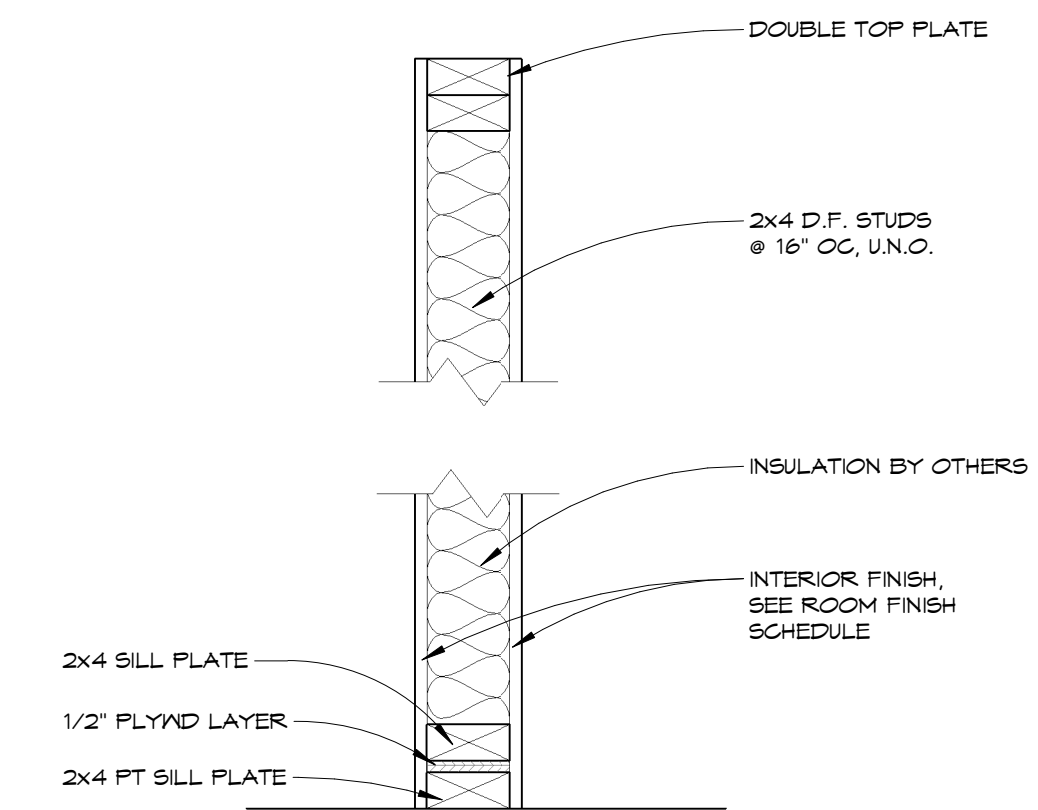
1 WALL TYPE - XE
1 1/2" = 1'-0"



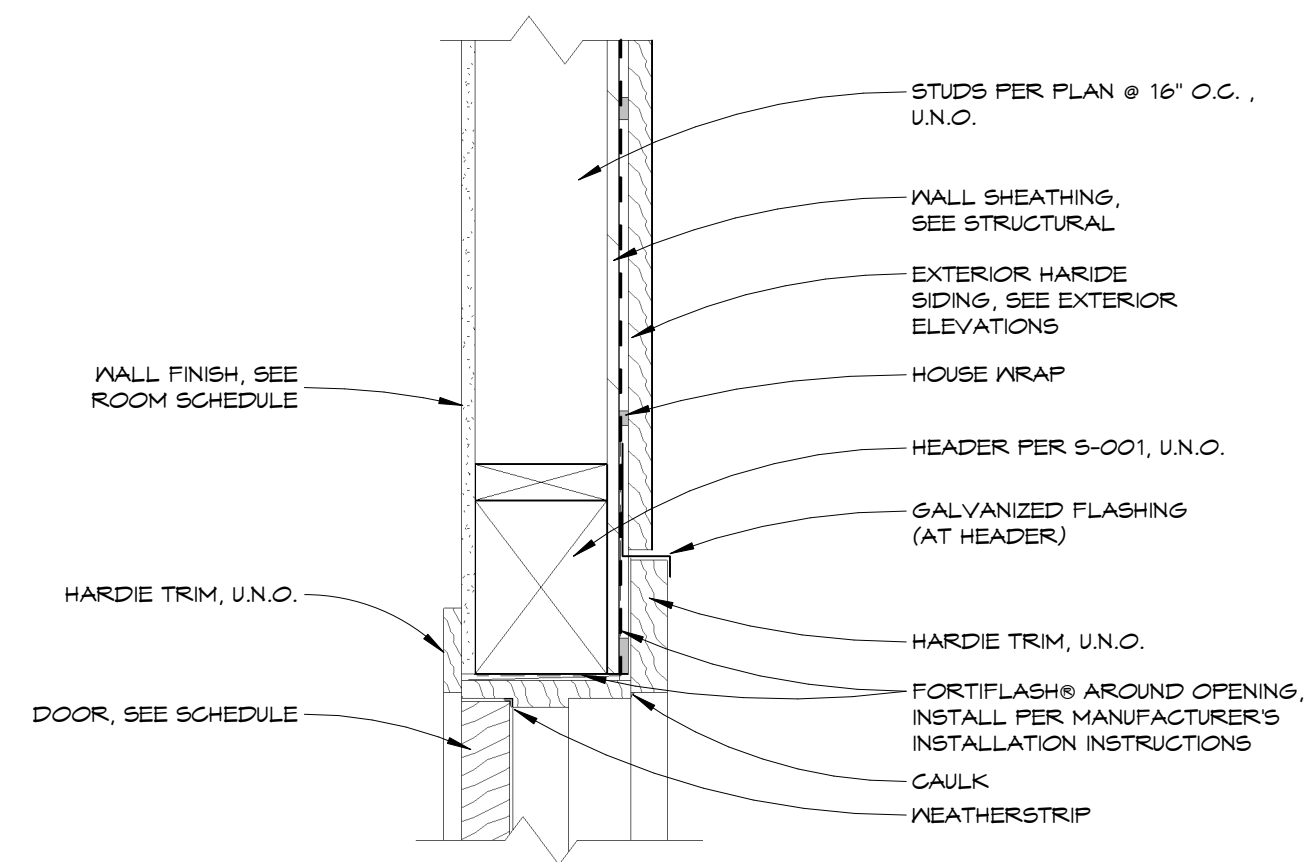
PLAN VIEW

NOTE:
INSULATION, PROVIDED BY OTHERS,
NOT SHOWN FOR CLARITY.

6 DOOR JAMB
1 1/2" = 1'-0"

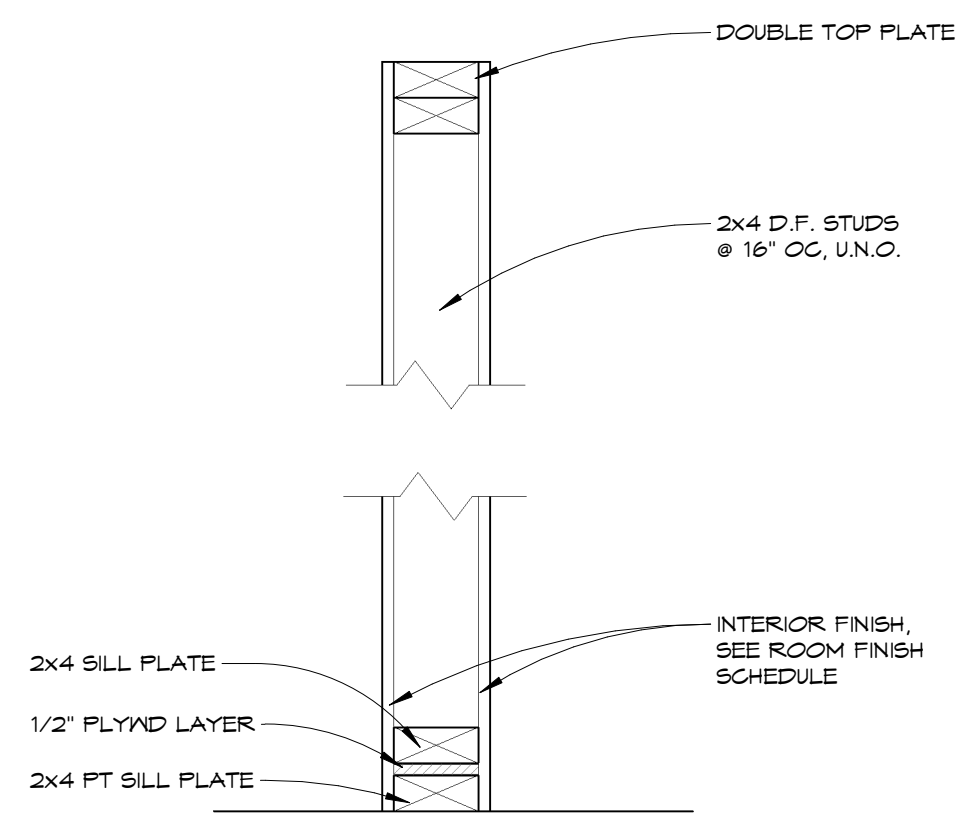


2 WALL TYPE - X4I
1 1/2" = 1'-0"



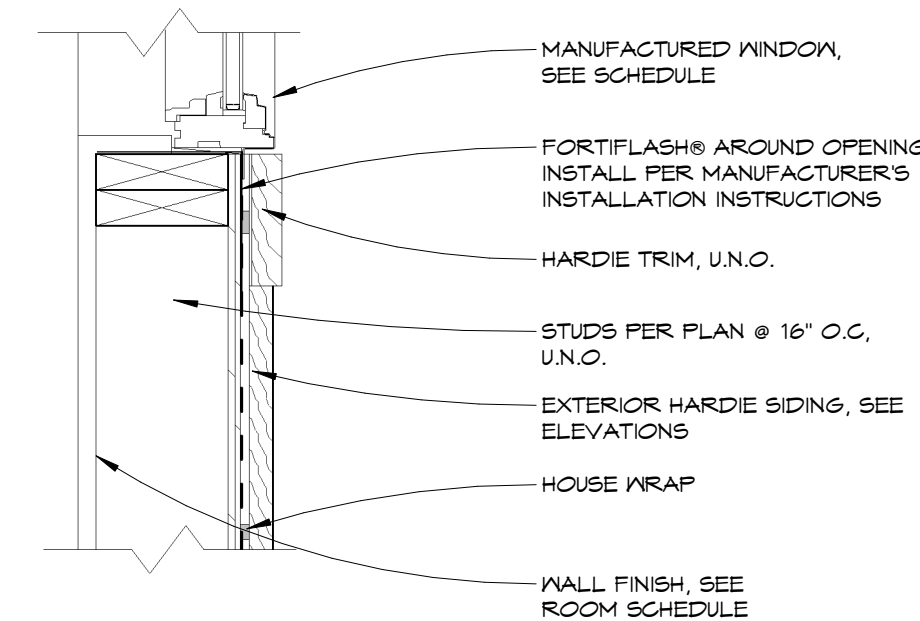
NOTE:
INSULATION, PROVIDED BY OTHERS,
NOT SHOWN FOR CLARITY.

7 DOOR HEADER
1 1/2" = 1'-0"

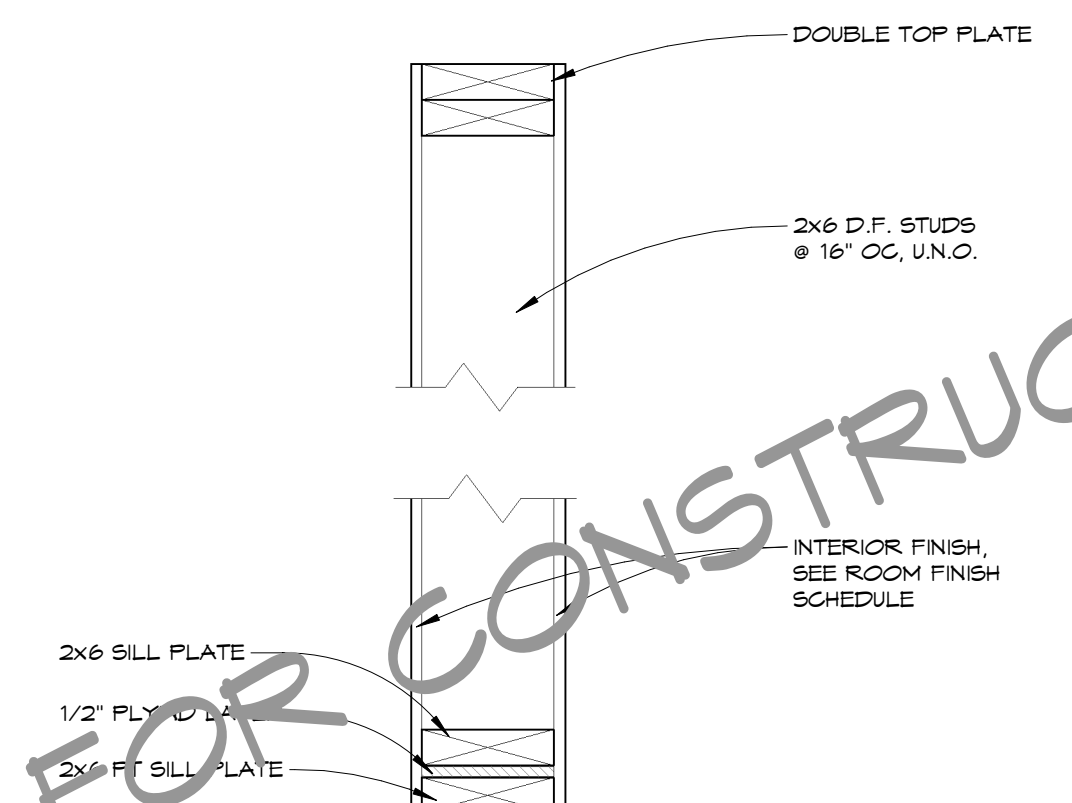


3 WALL TYPE - X4
1 1/2" = 1'-0"

NOTE:
INSULATION, PROVIDED BY OTHERS,
NOT SHOWN FOR CLARITY.



8 WINDOW SILL, JAMB SIM.
1 1/2" = 1'-0"



4 WALL TYPE - X6
1 1/2" = 1'-0"

NOT FOR CONSTRUCTION